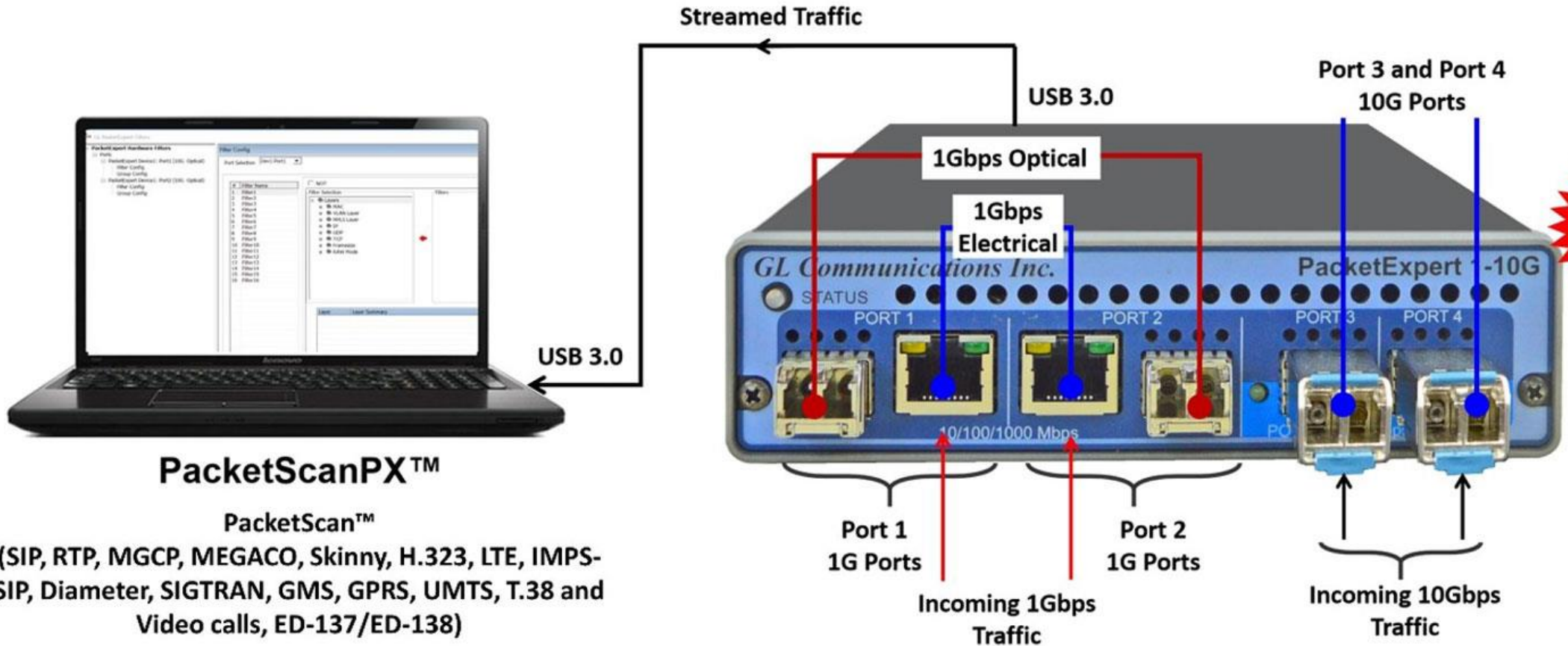

PacketScanPX™ – Wirespeed Capture and Filter Analysis



818 West Diamond Avenue - Third Floor, Gaithersburg, MD 20878
Phone: (301) 670-4784 Fax: (301) 670-9187 Email: gl-info@gl.com
Website: <http://www.gl.com>

PacketScanPX™



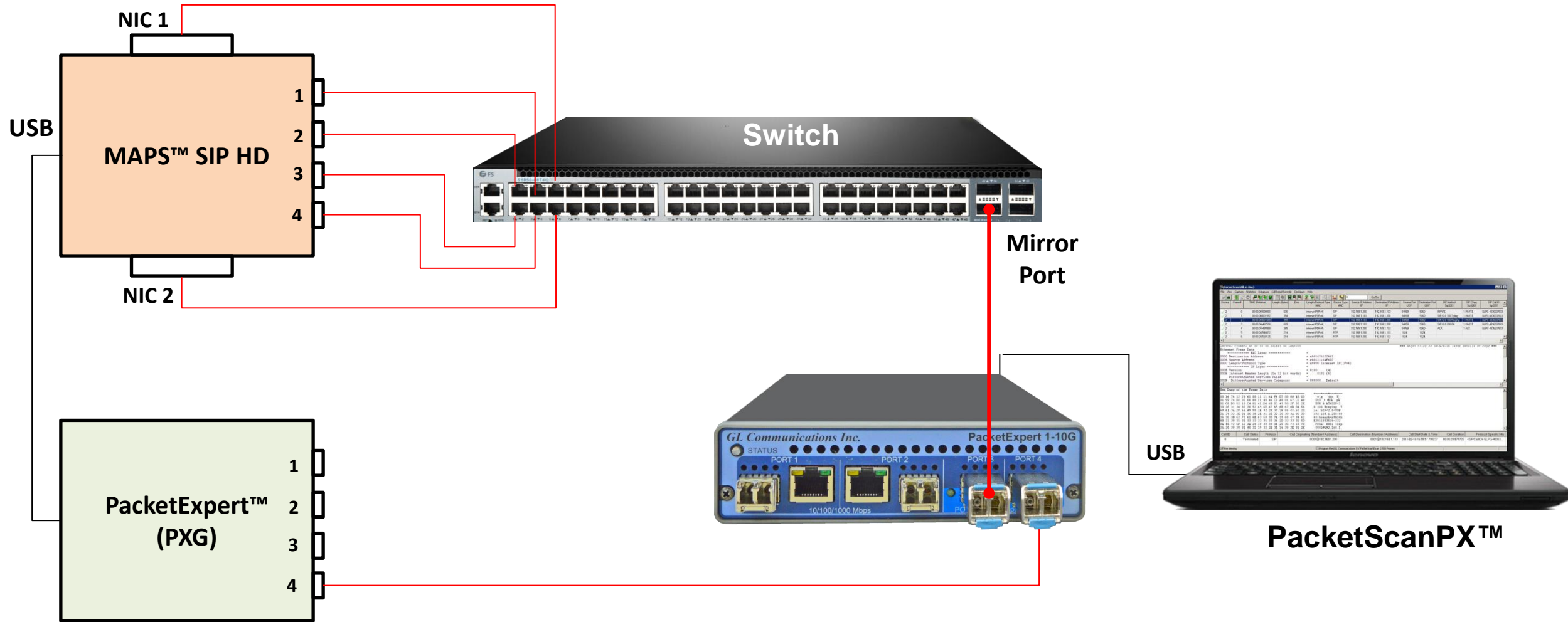
Main Features

- Capture and analyse Ethernet/IP traffic on either 1G ports or 10G ports (two 1G ports or two 10G ports).
- Capture and analyse at full wirespeed, up to 8 Gbytes of traffic utilizing the onboard 8 GB DDR3 RAM.
- Capture and analyse continuously at reduced rates of up to 2 Gbps (depends on the conditions).
- Complex Filtering capabilities to filter incoming wirespeed traffic at the hardware level, and forward to packet analyzer.
- Create up to 16 user defined hardware filters per port to filter-out traffic based on MAC, VLAN, IP, MPLS, TCP, UDP, Framesize and Raw Hex Bytes parameters.
- Precise hardware timestamping with accuracy in microseconds.
- PacketScanPX™ can monitor progress of up to 2000 simultaneous calls with bidirectional RTP traffic
- Capture and analyze packets through real-time analysis. Save the captured trace to a disk
- Statistics can be obtained for any fields or parameters in the protocol to study the performance and trend in the VoIP network.

Main Features (Cont..)

- Provides frame count, byte count, frames/sec, and bytes/sec etc of any of the protocol fields
- PacketScanPX™ can work with GL's VoiceBand Analyzer (VBA) and Call Data Records (CDR) applications to provide useful call detail records. These records can be investigated for bad calls using custom Excel® addins.
- PacketScanPX™ can send protocol fields, and call detail records, along with traffic summary of captured calls to a central database. NetSurveyorWeb™ displays the data from the database in a simple web-based browser, featuring rich graphics, custom search, report and filter configurations.
- PacketScanPX™ can work with GL's VoiceBand Analyzer (VBA) and Call Data Records (CDR) applications to record voice files for each direction.

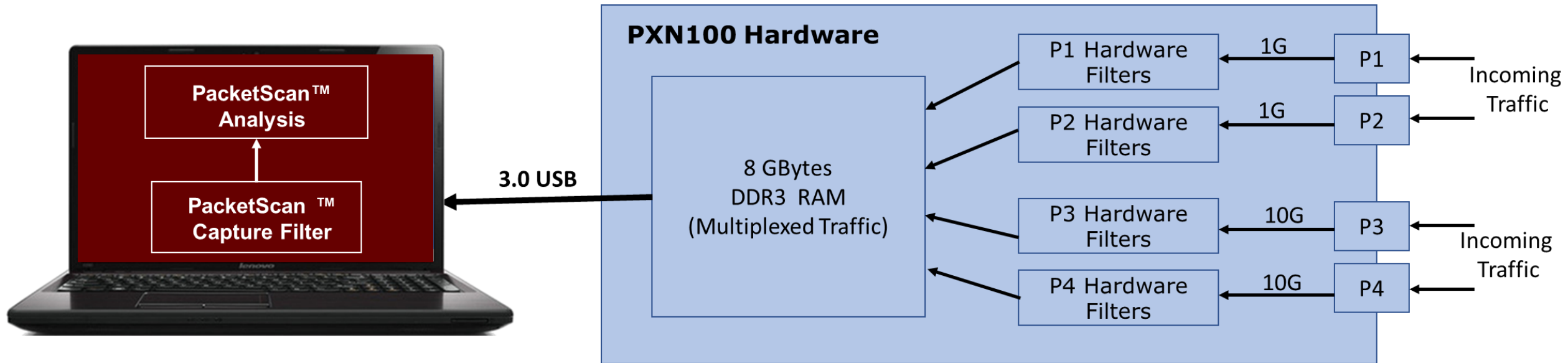
PacketScanPX™ Lab Setup



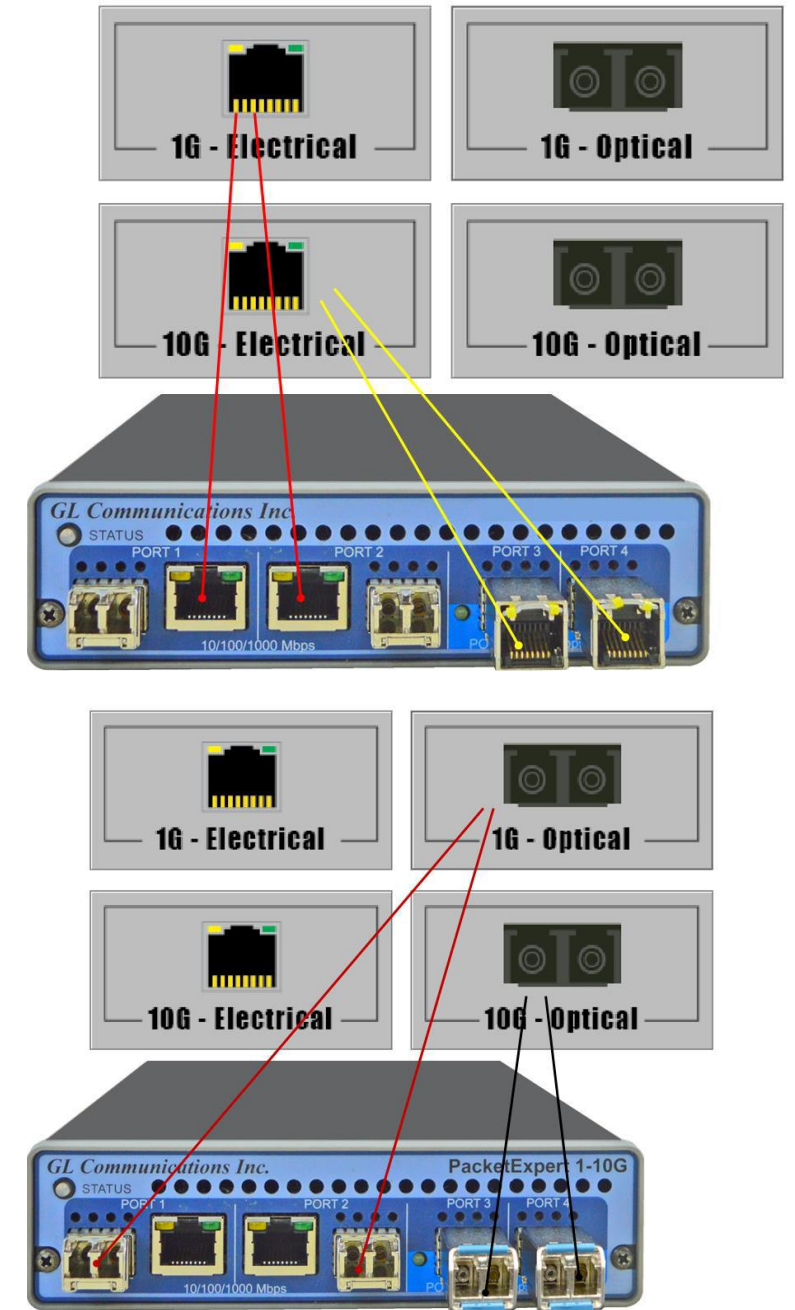
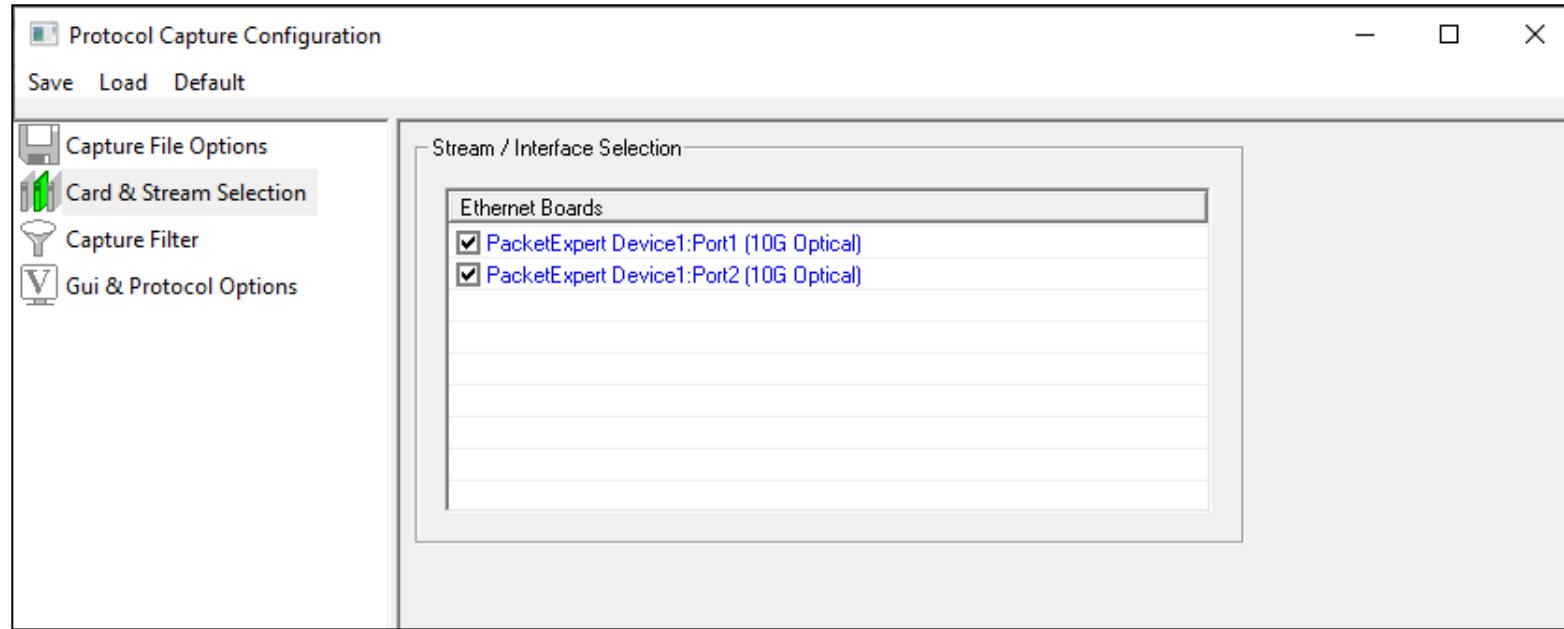
PacketScanPX™ - Licenses

- PKV100 - PacketScan™ (Online and Offline)
- Other PacketScan feature specific optional licenses are applicable.
- PXN100 - PacketExpert™ 10GX (warranty only)
- PXN101 - 10G option for PXN100 (license + warranty)
- PXN105 - Wirespeed Record / Playback (license + warranty)

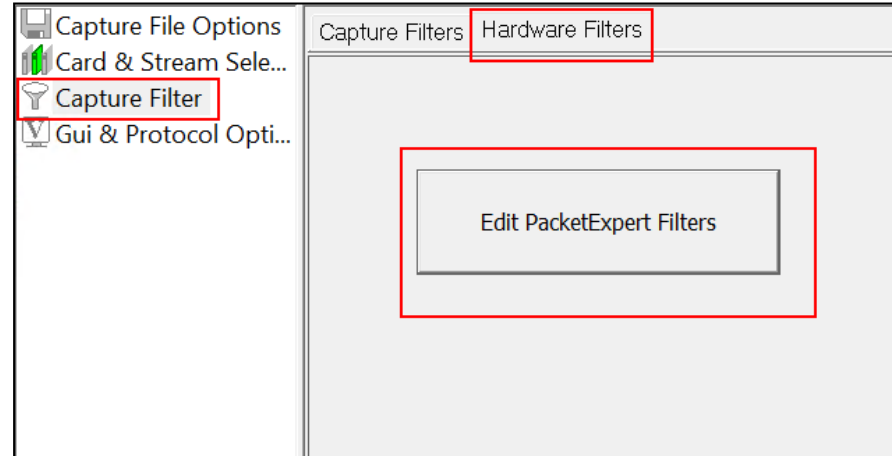
PacketScanPX™ - General Architecture



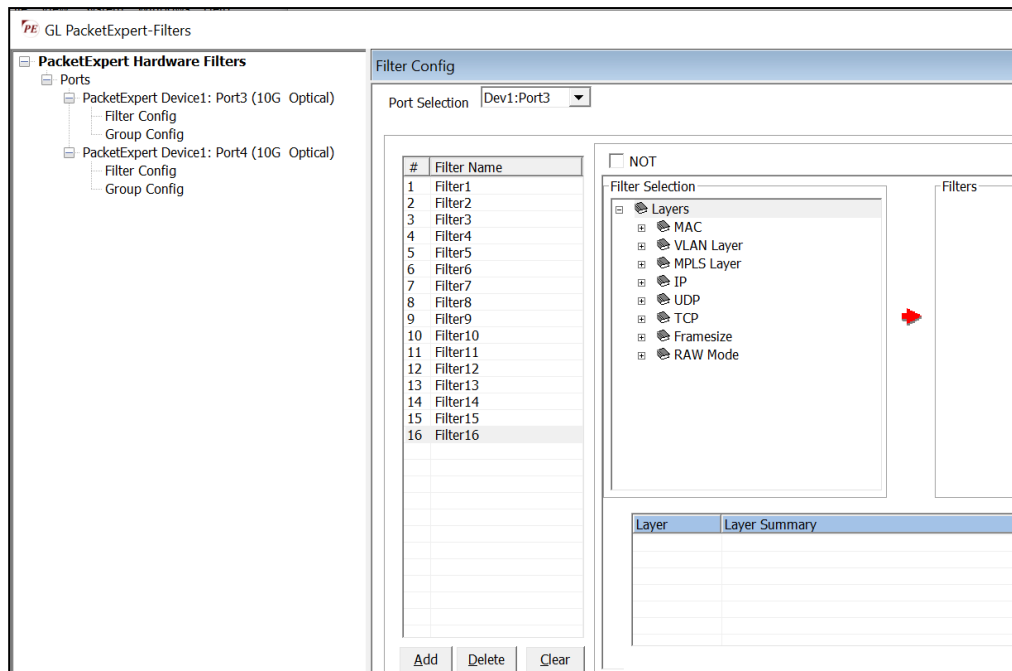
PacketScanPX™ - Capture Interfaces



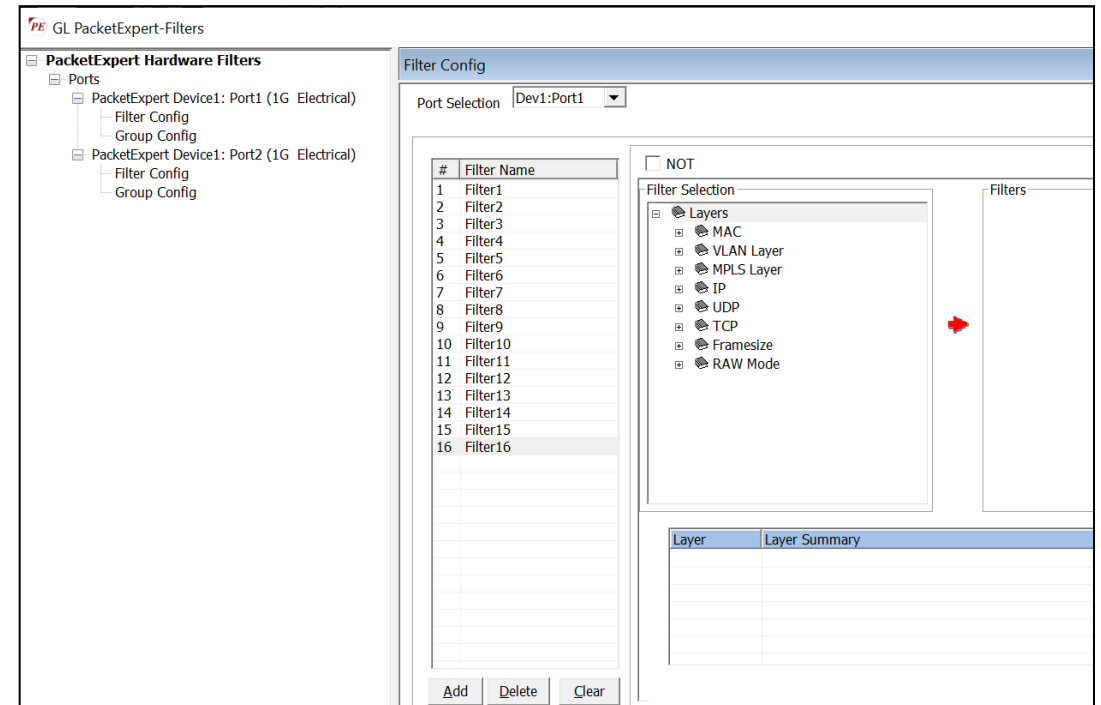
PacketScanPX™ - Hardware Filters



For 10G Optical Ports



For 1G Electrical Ports



Thank you!