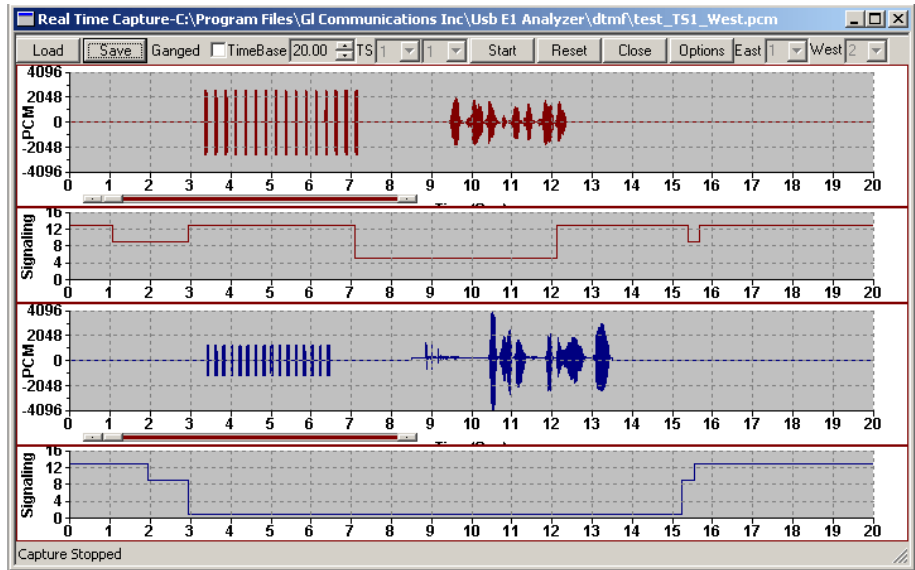


Real-time Stripchart Application



User Friendly GUI Interface

Analyze CAS (MF or MFCR2) Signaling

Real-time Capture and Off-Line Analysis Options

User-specified timeslot and Board Selections

Multiple T1 or E1 Interfaces

Zoom-In / Zoom-Out Feature

Ganged Feature for Synchronizing Displays

Monitoring of "Available Bytes" & "Missed Bytes" during Real-time Capture

Appends Data Between Successive Captures

Overview

The Real-time Stripchart application software (XX024) is used for analysis of CAS signaling. The application works with all GL's T1 E1 analyzers. The Stripchart enables non-intrusive capturing of PCM data and signaling, and subsequent plotting of the same onto a strip chart format. The application is perfect for CAS protocols, DTMF or MF Signaling, or other voice and signaling timing relationships. Now, Real-time Stripchart (xx024) is available as a part of T1 E1 analyzer basic applications.

Main Features

- Supports Real-time capturing and off-line analysis of PCM Data as well as Signaling.
- View data graphically with exact transitions of signals with time.
- Ability to capture PCM and signaling data on any of the-specified time slots.
- Grid based Canvas / Background display enabling ease of locating / reading data points.
- Option to choose specific T1 E1 ports in case of more than two port systems.
- Loading of previously captured PCM and Signaling files, for offline viewing.
- Zoom-In and Zoom-Out of data based on the time-base settings. The time base varies between 0.01 till 25. Easy intermediate zooming features without resetting to zero.
- Monitoring of "Available Bytes" & "Missed Bytes" in Real-time Capture, provides quick check of missed data option at any time of capture.
- Selection of Timer Interval to capture data.
- Ganged option synchronizes (both PCM & Signaling) data on the graphic display.
- Automated naming convention for saving PCM and Signaling file based on timeslots for loading the captured files in the appropriate timeslots.
- Appends data between successive capture.

For more details, please visit our web page <http://www.gl.com/stripchart.html>



GL Communications Inc.

818 West Diamond Avenue - Third Floor, Gaithersburg, MD 20878, U.S.A

(Web) <http://www.gl.com/> - (V) +1-301-670-4784 (F) +1-301-670-9187 - (E-Mail) gl-info@gl.com

Real-time Stripchart Configuration

This application works with T1 E1 analyzer hardware. At any given point of time, data (PCM & Signaling) can be captured from a maximum of any two T1 E1 ports. A range of channels can be selected for each port.

The timer interval (in msec) controls the capture rate. The Stripchart application is designed to give the maximum flexibility and ease of operation to the user. The details of different controllers of the GUI are shown in the figure to the right.

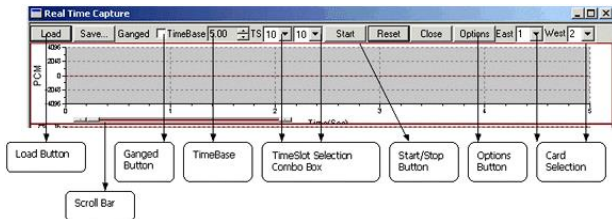


Figure: Stripchart Controls

Real-time Capture

The Stripchart application window is always invoked in Real-time mode. The ongoing capturing process can be seen at the Status Bar in the form of total captured bytes (for both East & West Cards).

Previously selected rate of capturing can be altered even during the capturing process. Rate of capture should be judiciously altered in order to avoid missed bytes.

The Real-time data captured can be viewed and also saved for further analysis. The Time Base control acts as a Zoom-In and Zoom-Out feature for the Strips.

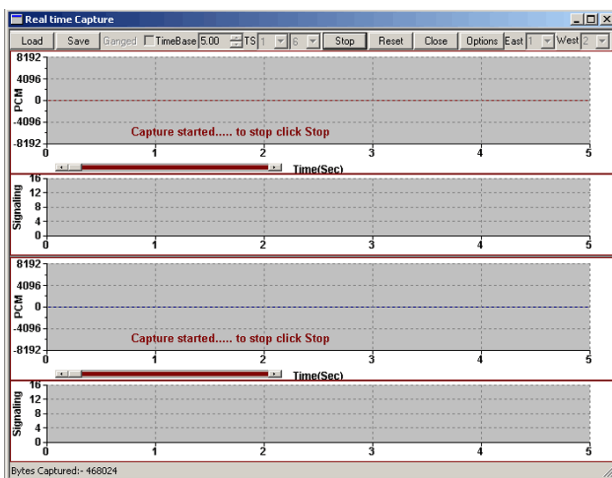


Figure: Capture in Progress

Offline Viewing of Captured Data

The previously captured PCM data along with corresponding Signaling information is displayed in this mode. In case of E1 systems, when the user chooses PCM files, the corresponding Signaling files automatically get picked up and displayed. The Ganged feature is used to keep all the charts in Synchronization on Time scale.

Time base can be set to 25 to view a compressed graph. This is the maximum allowable time base unit for the Stripchart application. The lowest allowable time base is 0.01. By default, the Time-Base scale is set to 5.

Available & Missed Bytes option is an added feature of Strip Chart GUI, which checks for any missing bytes and also for the available bytes.

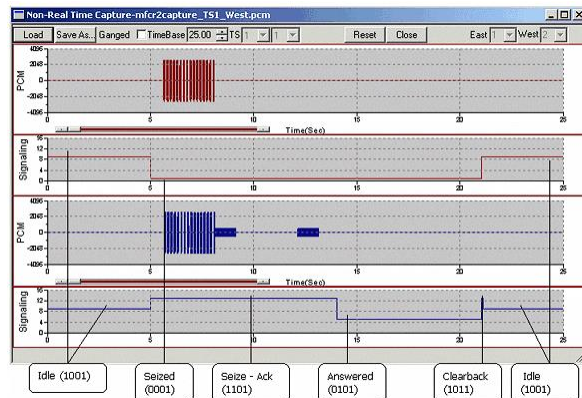


Figure: R2 Tones and Signaling in MFC-R2 capture (Offline)

Buyer's guide

- [XX024](#) - Real-time Strip-chart (Available as a part of basic applications in T1 E1 analyzer)

Related Software

- [XX020](#) - Record / Playback File Application
- [XX031](#) - Call Capture & Analysis Software
- [XX050](#) - Signaling Bit Recorder

Related Hardware

- [PTE001](#) - tProbe™ Dual T1 E1 Laptop Analyzer
- [XTE001](#) - Dual T1 E1 Express (PCIe) Boards
- [TTE001](#) - tScan16™ T1 E1 Boards
- [FTE001](#) - QuadXpress T1E1 Main Board
- [ETE001](#) - OctalXpress T1E1 Main Board plus Daughter Board
- [UTE001](#) - Portable USB based Dual T1 E1 Laptop Analyzer
- [HTE001](#) - Universal HD T1 E1 PCI Cards



818 West Diamond Avenue - Third Floor, Gaithersburg, MD 20878, U.S.A
 (Web) <http://www.gl.com/> - (V) +1-301-670-4784 (F) +1-301-670-9187 - (E-Mail) gl-info@gl.com