

Multi-Channel Bit Error Rate Test

Total Info Summary	All Sync Status	Sync Ch Count	Error Ch Count	Logic Error Count	Test Start	Test Duration
All channels >	All SYNC	48	0	0	18:06:05	00:00:34

Dev	TS	SCH	Average Bit Error Rate	Current Bit Error Rate	Error Status	SyncLoss Count	Error Count	Error Free Seconds	Error Seconds	SyncLoss Seconds	Severity Error Seconds	Available Seconds	Unavailable Seconds
1	0		0	0	SYNC	0	0	34	0	0	0	34	0
1	1		0	0	SYNC	0	0	34	0	0	0	34	0
1	2		0	0	SYNC	0	0	34	0	0	0	34	0
1	3		0	0	SYNC	0	0	34	0	0	0	34	0
1	4		0	0	SYNC	0	0	34	0	0	0	34	0
1	5		0	0	SYNC	0	0	34	0	0	0	34	0
1	6		0	0	SYNC	0	0	34	0	0	0	34	0
1	7		0	0	SYNC	0	0	34	0	0	0	34	0
1	8		0	0	SYNC	0	0	34	0	0	0	34	0
1	9		0	0	SYNC	0	0	34	0	0	0	34	0
1	10		0	0	SYNC	0	0	34	0	0	0	34	0
1	11		0	0	SYNC	0	0	34	0	0	0	34	0
1	12		0	0	SYNC	0	0	34	0	0	0	34	0
1	13		0	0	SYNC	0	0	34	0	0	0	34	0
1	14		0	0	SYNC	0	0	34	0	0	0	34	0
1	15		0	0	SYNC	0	0	34	0	0	0	34	0
1	16		0	0	SYNC	0	0	34	0	0	0	34	0
1	17		0	0	SYNC	0	0	34	0	0	0	34	0
1	18		0	0	SYNC	0	0	34	0	0	0	34	0

Overview

Multi-Channel Bit Error Rate Testing (MCBERT) measures correctness of data transmitted and received on T1/E1 lines/timeslots with stored data in a reference file. The application can work in real-time with data simultaneously being transmitted and received on T1/E1 lines/timeslots, or off-line with data stored in a file. The on-line T1/E1 testing can be done on full or fractional T1/E1. The following independent streams can be compared to a pattern file.

- A Hyperchannel per T1/E1 (Nx64k timeslots, where N = 1...24 T1, 1...31 E1) line/trunk.
- Multiple 64k (or 56k) channels.
- Multiple subchannels Nx8K (8k, 16k...56k). For example, for T1 it could be up to 24x8 separate 8K subchannels (eight sub-channels per timeslot).

For more details, please visit our web page <http://www.gl.com/multichannelbert.html>

Functional Features

The visual interface of this application consists of the following controls:

- **Rx, Tx, or Both:** Provides options to select Rx only mode to receive the data, Tx only mode to transmit the selected BER pattern (or a pattern file), or Tx Rx mode to send and receive the data.
- **Time Slots:** Allows user to select independent stream timeslots, or hyper channels, or sub-channels to be tested.
- **Insert Error:** Allows user to insert errors while transmitting the selected BER pattern or a file.
- **Pattern File:** User can choose any type of file to be used as the reference file. The chosen file is used for either online or offline testing.
- **Data from File:** For Offline analysis, user can select any type of captured file to be compared against the reference file.
- **Log:** Records the comparison of Expected and Received data to a file.
- **Bit Shift Synchronization:** Allows to achieve proper synchronization with smaller file sizes on sub channels.

The following columns are displayed when the MCBERT is monitoring a pattern or data file:

- **Average Error Rate:** Displays the rate of error received since the start of MCBERT.
- **Error Status:** Displays SYNC if the received data currently matches with the ref data.
- **SyncLoss Count:** Displays number of transitions from SYNC state to noSYNC state.
- **Error Count:** Displays total number of single bit errors while in SYNC state.
- **Error Free Seconds:** Displays total seconds without any errors while in SYNC state.
- **Error Seconds:** Displays total number of seconds with one or more errors (while in SYNC), and includes seconds during which there was noSync.
- **SyncLoss Seconds:** Displays seconds when MCBERT in noSync or PreSync state.

Online and Offline Testing of Input Streams

Channels 1 to 24 for T1 and 1 to 32 for E1 per Card

7 Sub-Channels Selection (8 to 56Kbps), each of 8 kbps

Hyper Channels Selection Ranging from 2x64K to 24/32

Data Transmission Rate of 64/56/N*64 Kbps

3 Sync States - NoSync, Pre-Sync, and Sync to Compare Bits

Log File Option to Record Final Results



GL Communications Inc.

818 West Diamond Avenue - Third Floor, Gaithersburg, MD 20878, U.S.A

(Web) <http://www.gl.com/> - (V) +1-301-670-4784 (F) +1-301-670-9187 - (E-Mail) gl-info@gl.com

Real-time and Offline Analysis

In real-time analysis, a pattern file is selected for comparing the data. The entire pattern file is read into a circular memory buffer. In online analysis this buffer is subsequently used to compare with the input stream from T1/E1 line(s) or input file. Multiple input streams are always compared to the same patterns.

Mode of received data (64kbps, n x 64kbps or n x 8kbps) is selected depending upon timeslot specification. With the start of the MCBERT, the application provides all the statistics.

In case of Offline analysis, selection of data file will be compared with the selected reference file to provide the statistics.

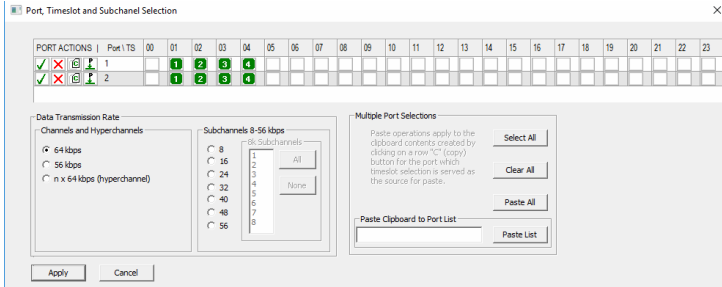


Figure: Card / Timeslot / Subchannel Selection

Selecting Streams on T1/E1 Lines

The following selections can be made:

- Channels 1-24 for T1 and 1-32 for E1 per card (multiple streams per card). Hyper channel selection possible.
- Sub channels Up to 8x24/32- 8K sub channels (one or more bits per timeslot can represent a separate stream, for example, 56k is using 7 bits per timeslot. Multiple streams per timeslot and multiple timeslots per card can be used.

Note: When multiple timeslots are selected, selection of different data rate transmission is possible. When 64k radio button is selected, it means N separate streams of single timeslot each.

Synchronization Algorithm and States

MCBERT can be in one of the following three states:

NoSync

Initially MCBERT will be in NoSync state where it stays till the continuous bytes match is found between five consecutive input bytes and five consecutive pattern bytes.

PreSync

After continuous match is found MCBERT state changes in PreSync till sufficient number of bytes are matched, so that error rate becomes below 10^{-2} .

Sync

After sufficient number of consecutive input bytes match, MCBERT enters Sync state.

Any errors in PreSync or Sync state exceeding the error rate more than 10^{-2} cause transition into NoSync state.

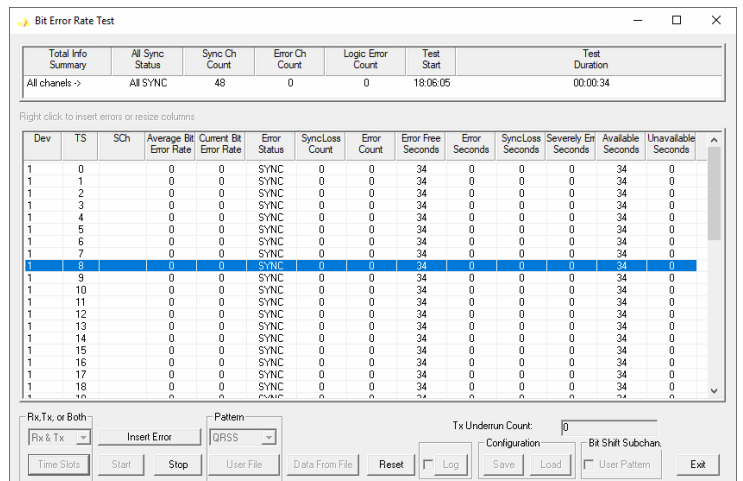


Figure: Multi-channel Bit Error Rate Test

Buyer's guide

- [XX018](#) – Multi-Channel BERT Software

Related Software

- [XX670](#) – w/ Multi-Channel BER Testing
- [XX610](#) – w/ Transmit and Receive File Capability
- [XX020](#) – Record/Playback File software
- [XX019](#) – Transmit / Receive File Utility Software

Related Hardware

- [UTE001](#) – Portable USB based Dual T1 or E1 Laptop Analyzer
- [HTE001](#) – Universal HD T1 or E1 PCI Cards
- [PTE001](#) – tProbe™ Dual T1 E1 Laptop Analyzer
- [FTE001, ETE001](#) – Quad and Octal T1 E1 Analyzer Boards

*Specifications and features subject to change without notice.



818 West Diamond Avenue - Third Floor, Gaithersburg, MD 20878, U.S.A
 (Web) <http://www.gl.com/> - (V) +1-301-670-4784 (F) +1-301-670-9187 - (E-Mail) gl-info@gl.com