

FAX Tx/Rx Configuration

VQuad™ scripting provides the ability to both send and receive a fax session along with specifying a variety of settings. The settings include Max Transmit Rate and Min Receive Rate which can effectively restrict available fax sessions. The other configuration settings include:

- ECM (Error Correction mode) on / off option to automatically detect and correct errors.
- RX Image Coding (receive fax only) options - MH (Modified Huffman), MR (Modified read), MMR (Modified Modified READ).
- Auto saved fax (both east and west) to PCM file can be analyzed using GL Insight and GL Fax Extractor.

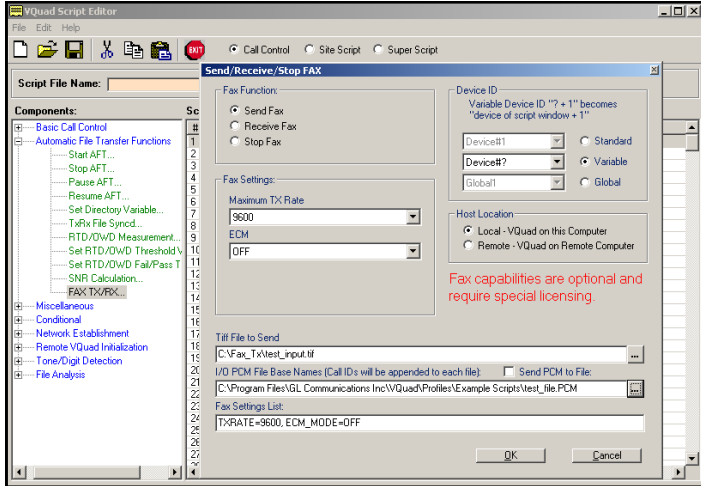


Figure: VQuad™ Fax Tx/Rx Configuration

Remote Client WebViewer™

The VQuad™ Fax emulation Summary and Error results can be sent to the WebViewer™ Central database. These events can be queried using the WebViewer™ web based browser. Filtering of the results can be based on specific Error, Starting or Ending speed, Completed pages, Tx/Rx Lines including Bad Lines, Resolution and ECM settings.

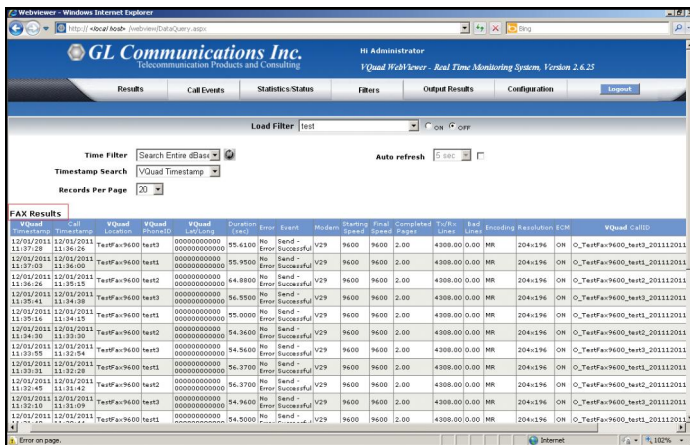


Figure: Remote Client WebViewer™

VQuad™ FAX Events Log

The VQuad™ Fax Emulation includes three event screens, Fax Messages, Fax Summary and Fax Errors. The Fax Messages is shown in chronological order. Multiple Fax Message screens can be displayed simultaneously thus showing full duplex fax sessions.

The Fax Summary includes one event per fax (Fax Send and Fax Receive) which shows both the initial settings and final settings upon fax completion (i.e. Fax Speed, Line Sent, Bad Lines, Pages Received). The Fax Summary also provides insight whether the Fax completed or the Fax failed in which case the Error will be provided.

The Fax Error screen provides all Fax Errors associated with the Fax Send/Receive. Additional information is provided for each Fax error in order to understand the cause of the error. All event screens can be saved to text file in real-time.

The Fax status as shown on Fax Events screen includes Total Successful and Total Failed faxes for each VQuad™ device ID.

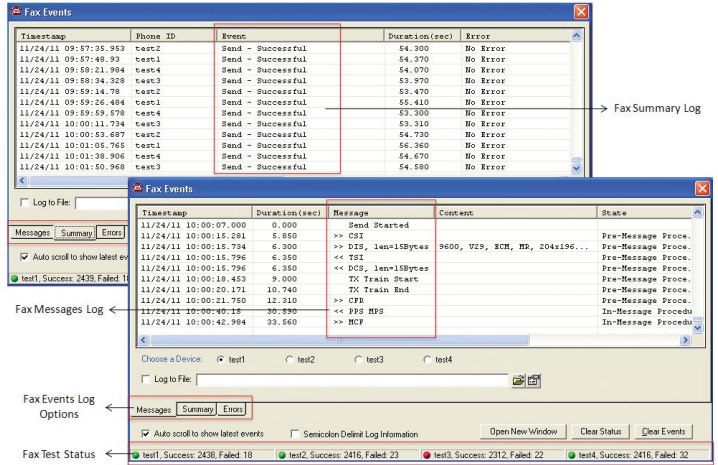


Figure: VQuad™ Fax Events Log

Buyer's Guide

- [VQT022](#) - VQuad™ Fax Emulation (2 simultaneous ports)
- [VQT022a](#) - VQuad™ Fax Emulation (8 simultaneous ports)
- [VBA038](#) - Fax decoder/demodulator
- [FXT001](#) - GL Insight™ - Single Fax Analysis - TDM
- [FXT002](#) - GL Insight™ - Single Fax Analysis - IP
- [VQT010](#) - VQuad™ Software (Stand Alone)
- [VQT241](#) - VQuad™ Dual UTA with Balanced, Analog FXO, PTT, and Phone Handset Interfaces
- [VQT242](#) - VQuad™ Dual UTA Bluetooth option for controlling any Bluetooth® device (Call Control and Audio)
- [VQT013](#) - VQuad™ with SIP (VoIP) Call Control
- [VQT015](#) - VQuad™ with T1 E1 Call Control
- [VQT018](#) - VQuad™ Lite with Dual UTA FXO and Bluetooth® devices
- [VQT270](#) - VQuad™ Probe with Dual UTA
- [VQT040](#) - VQuad™ WebViewer™



GL Communications Inc.

818 West Diamond Avenue - Third Floor, Gaithersburg, MD 20878, U.S.A

(Web) <http://www.gl.com/> - (V) +1-301-670-4784 (F) +1-301-670-9187 - (E-Mail) gl-info@gl.com