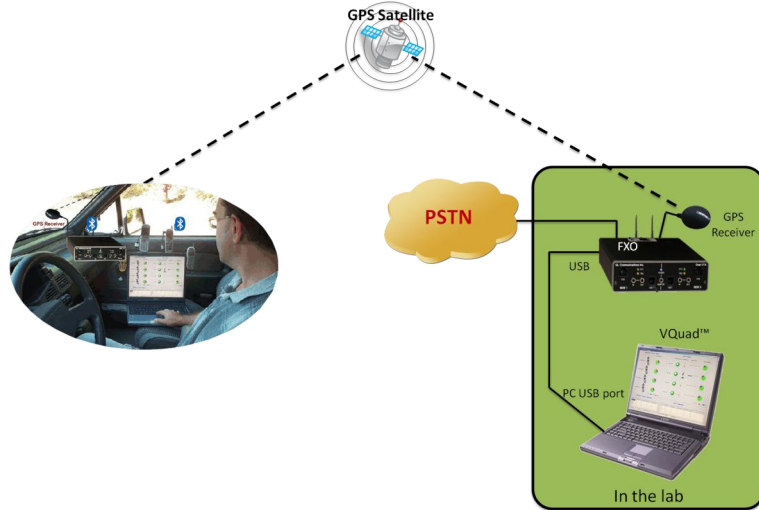


VQT Drive Testing

(Wireless Voice Quality Testing goes Mobile)



Compact and Portable Solution



Bluetooth® Compatible for Audio & Call Control Functions



Synchronized Transmission of Voice Files



PESQ LQ/LQO/WB, PAMS, PSQM



Automatic Round Trip Delay (RTD) & One Way Delay (OWD) Measurements



GPS Mapping including Timestamp and Co-ordinates



Full-Featured Remote Capability



Acoustic Echo Canceller Testing



Overview

GL introduces Wireless VQT Drive-Test Solution, which provides the necessary portable equipment and functionality for a true mobile test. This solution includes the necessary functionality to support call control for most mobile phone manufactures/models, the capability for sending/recording voice over the mobile phone, the ability to analyze the voice and provide VQT measurement results along with VQT analysis results. Finally, a GPS option to permit time synchronization between two geographically separated systems as well as location information for drive testing. The results can also be plotted using common GPS mapping software. GL's Wireless VQT solution is a must for anyone looking for a fully automated, portable, and easy-to-use wireless test solution, one that is powerful enough to fully analyze the wireless network or mobile phones and provide complete results.

New VQuad™ Probe (VQT270), self contained unit includes VQuad™, Dual UTA and PC. Control via Ethernet Remote Desktop (with support for mouse/keyboard).

For more details, please visit our web page <http://www.gl.com/VQTdrivetesting.html>.

Main Features

- Compact and portable solution that may reside in a vehicle (truly portable)
- Mobile Phone call control (currently available for most phone manufactures/models)
- Bluetooth® compatible for both Call Control as well as Send/Record Audio functions. Also, performs RSSI, Battery level functions, Network verification.
- Synchronized software for sending/recording of voice files for Voice Quality, and Echo Measurements over TDM, VoIP, and Wireless networks
- Automatic Round Trip Delay (RTD) and One Way Delay measurements (OWD) with complete results sent to GL VQT
- Acoustic echo canceller testing
- Automatic control of Push-to-talk phones/radios (key/unkey radio)
- GPS Location includes stamping each VQT result with Latitude, Longitude, and GPS Time Stamp
- GL VQT Automatic Mode allows automatic execution of the VQT algorithms (PESQ LQ/LQO/WB, PAMS, PSQM+)
- Full-featured remote capability that permits loading configurations, starting/stopping tests, and retrieving test results.
- Log all results with GPS time stamping /coordinates and plot using off-the-shelf GPS mapping software
- Obtain network signal strength levels from wireless phone

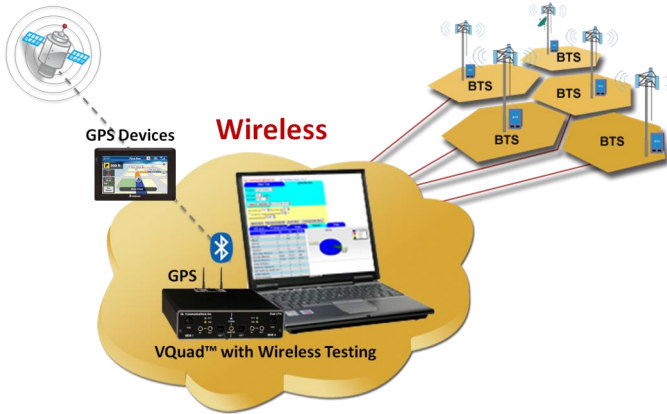


818 West Diamond Avenue - Third Floor, Gaithersburg, MD 20878, U.S.A

(Web) <http://www.gl.com/> - (V) +1-301-670-4784 (F) +1-301-670-9187 - (E-Mail) gl-info@gl.com

Configuration

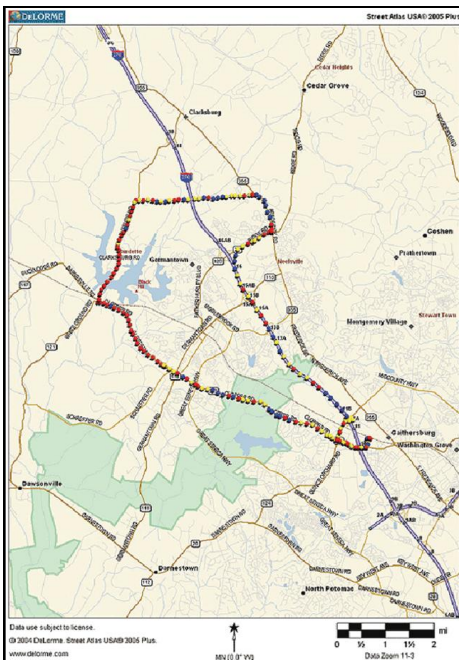
A single VQuad™ with a Dual UTA connected to a laptop PC can operate up to 2 wireless mobile phones (via data cable or Bluetooth®) simultaneously. Call Control of the wireless phones, sending/recording voice through the wireless phone (via data cable or Bluetooth®), performing signal strength test, round-trip delay, and one way delay measurements can all be controlled through the VQuad™ application.



VQT Results and GPS Mapping

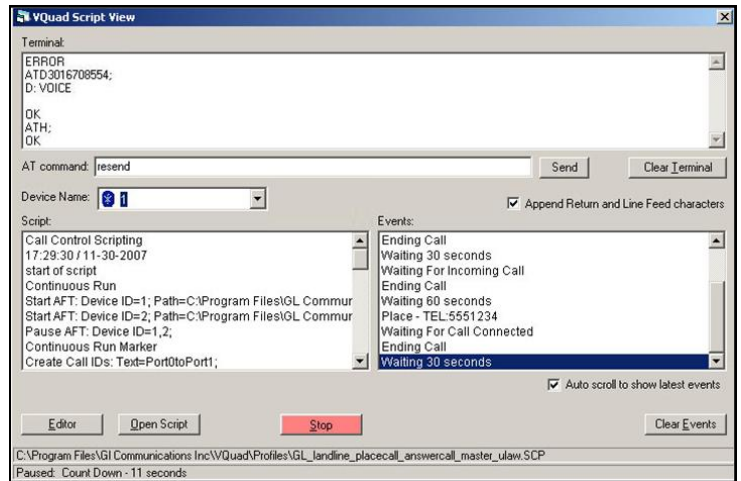
As a result of the Drive Testing and subsequent VQT measurements, a log is created with all relevant information, including GPS timestamp and coordinates. This logged information can be imported to most GPS mapping software applications for an overall graphical understanding of the results.

Logging results with GPS time stamping/coordinates and plot using off-the-shelf GPS mapping software. GPS Location includes stamping each VQT result with Latitude, Longitude, Altitude, and GPS Time Stamp.



Wireless Call Control

As an option to the GL VQuad™ software, the ability to automatically control the wireless phone (via data cable or Bluetooth®) for placing calls, answering calls, disconnecting calls, and obtaining relevant information such as network signal strength is available using the VQuad™ Call Control option.



Buyer's Guide

[VQT010](#) - VQuad™ Base Software

[VQT004](#) - Voice Quality Testing (PESQ, PAMS, PSQM)

[VQT002](#) - Voice Quality Testing (PESQ only)

[VQT030](#) - Network Command Center

[EMU037](#) - Echo Measurement Utility (EMU) Software

Related Hardware

[VQT270](#) - VQuad™ Probe with Dual UTA

[VQT241](#) - VQuad™ Dual UTA with Balanced, Analog FXO, PTT, and Phone Handset Interfaces

[VQT242](#) - VQuad™ Dual UTA Bluetooth option for controlling any Bluetooth device (Call Control and Audio)

[VQT442 \(cable\)](#) - Mobile Audio Interface for Smartphones

[VQT443 \(cable\)](#) - 3-wire Headset Interface Adaptor for Smartphones

Related Software

[VQT204](#), [VQT204u](#), [VQT204e](#) - GPS for Dual UTA

[VQT013](#) - SIP (VoIP) Call Control

[VQT015](#) - T1 E1 Call Control Additional Options

[VBA032](#) - Near Real-time Voice-band Analyzer

[VQT040](#) - VQuad™ Webviewer™



GL Communications Inc.

818 West Diamond Avenue - Third Floor, Gaithersburg, MD 20878, U.S.A

(Web) <http://www.gl.com/> - (V) +1-301-670-4784 (F) +1-301-670-9187 - (E-Mail) gl-info@gl.com