

Real-time Stripchart

User Friendly GUI Interface



Analyze CAS (MF or MFCR2) Signaling



Real-time Capture and Off-Line Analysis Options



User-specified timeslot and Board Selections



Single / Dual T1 or E1 Interfaces



Zoom-In / Zoom-Out Feature



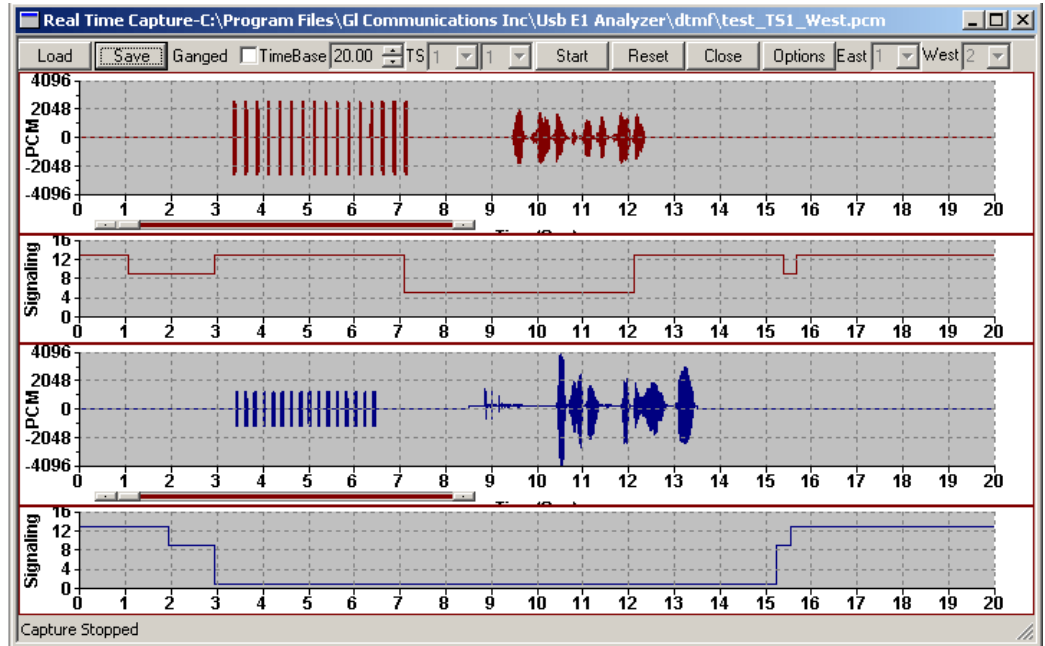
Ganged Feature for Synchronizing Displays



Monitoring of "Available Bytes" & "Missed Bytes" during Real-time Capture



Appends Data Between Successive Captures



Real-time Stripchart

The Real-time Stripchart application is optional software for analysis of CAS signaling, with GL Communications' T1E1 analyzers. Stripchart application enables non-intrusive capturing of PCM data and signaling, and subsequent plotting of the same onto a strip chart format. The application is perfect for CAS protocols, DTMF or MF Signaling, or other voice and signaling timing relationships.

Stripchart Main Features:

- Compatible with Windows® 2000/XP/Vista Operating Systems
- Supports Real-time capturing and off-line analysis of PCM Data as well as Signaling
- View data graphically with exact transitions of signals with time
- Ability to capture PCM and signaling data on any of the-specified time slots
- Grid based Canvas / Background display enabling ease of locating / reading data points
- Option to choose specific T1/E1 ports in case of more than two port systems
- Loading of previously captured PCM and Signaling files, for off-line viewing
- Zoom-in and Zoom-Out of data based on the time-base settings. The time base varies between 0.01 till 25. Easy intermediate zooming features without resetting to zero.
- Monitoring of "Available Bytes" & "Missed Bytes" in Real-time Capture, provides quick check of missed data option at any time of capture
- Selection of Timer Interval to capture data
- Ganged option synchronizes (both PCM & Signaling) data on the graphic display
- Automated naming convention for saving PCM and Signaling file based on timeslots for loading the captured files in the appropriate timeslots
- Appends data between successive capture

For more details, please visit our web page <http://www.gl.com/stripchart.html>.



GL Communications Inc.

818 West Diamond Avenue - Third Floor. Gaithersburg, MD 20878 • (V) 301-670-4784 (F) 301-670-9187

Web Page Address: <http://www.gl.com/> • E-Mail Address: gl-info@gl.com

Real-time Stripchart Configuration

This application works with T1/E1 analyzer hardware. At any given point of time, data (PCM & Signaling) can be captured from a maximum of any two T1/E1 ports. A range of channels can be selected for each port.

The timer interval (in msec) controls the capture rate. The Stripchart application is designed to give the maximum flexibility and ease of operation to the user. The details of different controllers of the GUI are shown in the figure to the right.

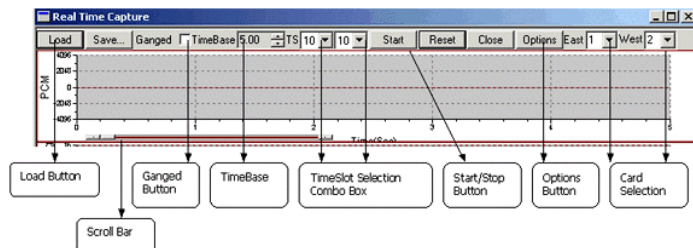


Figure: Stripchart Controls

Real-time Capture

The Stripchart application window is always invoked in Real-time mode. The ongoing capturing process can be seen at the Status Bar in the form of total captured bytes (for both East & West Cards).

Previously selected rate of capturing can be altered even during the capturing process. Rate of capture should be judiciously altered in order to avoid missed bytes.

The Real-time data captured can be viewed and also saved for further analysis. The Time Base control acts as a Zoom-In and Zoom-Out feature for the Strips.

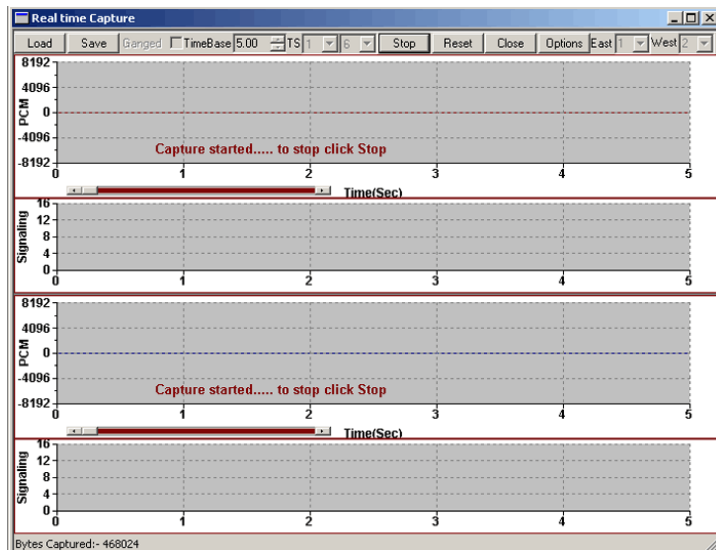


Figure: Capture in Progress

Offline Viewing of Captured Data

The previously captured PCM data along with corresponding Signaling information is displayed in this mode. In case of E1 systems, when the user chooses PCM files, the corresponding Signaling files automatically get picked up and displayed. The Ganged feature is used to keep all the charts in Synchronization on Time scale.

Time base can be set to 25 to view a compressed graph. This is the maximum allowable time base unit for the Stripchart application. The lowest allowable time base is 0.01. By default, the Time-Base scale is set to 5.

Available & Missed Bytes option is an added feature of Strip Chart GUI, which checks for any missing bytes and also for the available bytes.

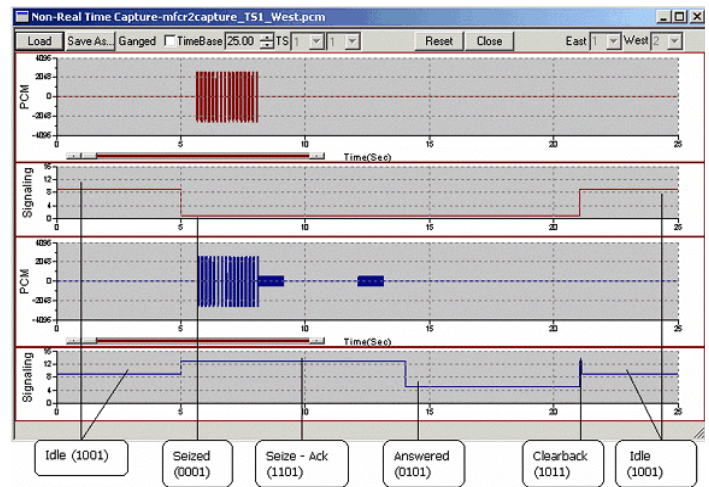


Figure: R2 Tones and Signaling in MFC-R2 capture (Offline)

Buyers Guide

[XXX024](#) - Real-time Strip-chart (T1 or E1)

Related Software

[XXX020](#) - Record / Playback File Application (T1 or E1)

[XXX030](#) - Call Capture & Analysis Software (T1 or E1)

[XXX050](#) - Signaling Bit Recorder (T1 or E1)

Related Hardware

[UTE001](#) - USB based Dual T1 or E1 Laptop Analyzer

[UTA001/UEA001](#) - Basic USB based Dual T1 or E1 Laptop Analyzer Software

[HTE001](#) - Universal HD T1 or E1 PCI Cards

[HUT001/HUE001](#) - Basic Universal HD T1/E1 Software