

Switch and Subscriber Emulation



Supports Overlap Digit Sending



1 to 4 Signaling Links



Quick Configuration For Called & Calling Number



LAPD and Q.931 Layers



NFAS Supported



Standards/ Variants –ISDN AT&T, Nortel, DMS-250, QSIG, and more...



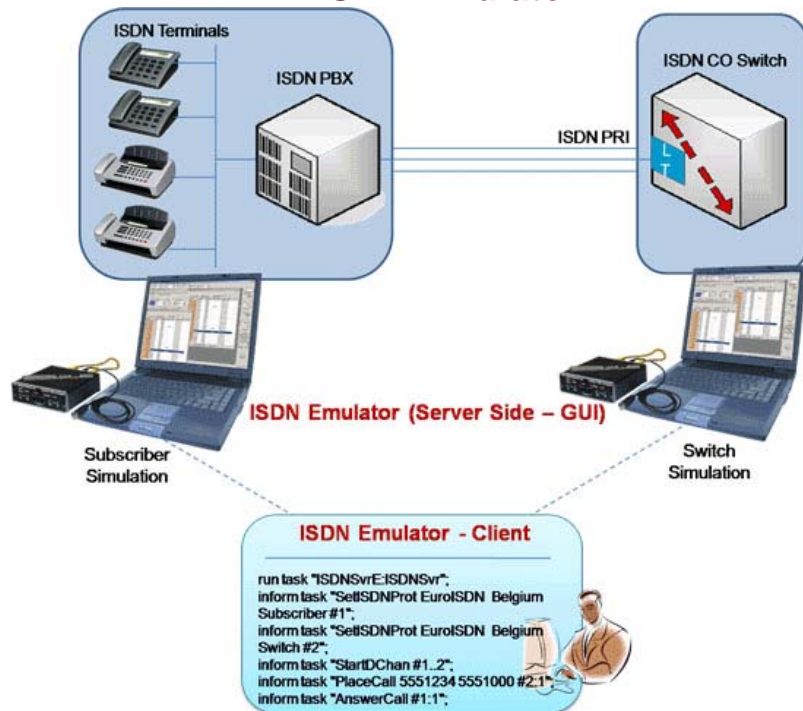
Overlap Digit Send Supported



Call Records For Complete & Incomplete Calls



PRI ISDN Emulator



GL's ISDN Emulator offers a complete solution for testing, troubleshooting, installation and maintenance of devices and networks implementing PRI ISDN. It is useful to test ISDN products designed for either U or S/T interface, including network terminations, Type 1 terminating equipment, and terminal adapters. ISDN equipment includes telephones, switchboards, PBXs, PC cards, video conferencing equipment, interconnect systems, switches and routers.

GL's flexible and versatile ISDN Emulator is available as GUI based and scripted applications with T1/E1 Analyzer, through which the various ISDN configurations can easily be created. This ISDN configuration includes selection of various ISDN standards, variants & NFAS, etc. The ISDN Emulator also incorporates the flexibility to modify ISDN call parameters & message content. This flexibility ensures that the ISDN configurations will communicate with the system under test. It's possible to emulate a complete ISDN connection (switch to subscriber) all in the same PC.

Main Features

- Nearly all ISDN standards and variants are supported.
- 1 to 4 configurable signaling links
- Switch and Subscriber emulation
- Provides various release cause codes such as rejected, no user response, user busy, & more.
- Provides simple NFAS setup for T1
- Call records for complete or incomplete calls
- Place call or accept call for each timeslot or for the whole trunk.

Specifications

ISDN Standards Compliance

USA ISDN AT&T, Bellcore, National ISDN-2, Nortel, DMS-250, Siemens EWSD

Euro ISDN Belgium, China, Europe, France, Britain, Germany, Sweden

ASIA ISDN Australia, Hong Kong, Japan, Singapore

QSIG

ISDN Signaling

Available protocol layers LAPD, Q.931

Maximum links 1 to 4

For more details on GUI ISDN Emulator, visit our web page

<http://www.gl.com/isdnemulator.html>.



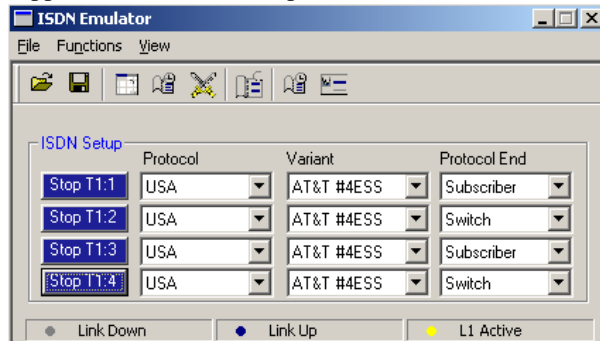
GL Communications Inc.

818 West Diamond Avenue - Third Floor. Gaithersburg, MD 20878 • (V) 301-670-4784 (F) 301-670-9187

Web Page Address: <http://www.gl.com/> • E-Mail Address: gl-info@gl.com

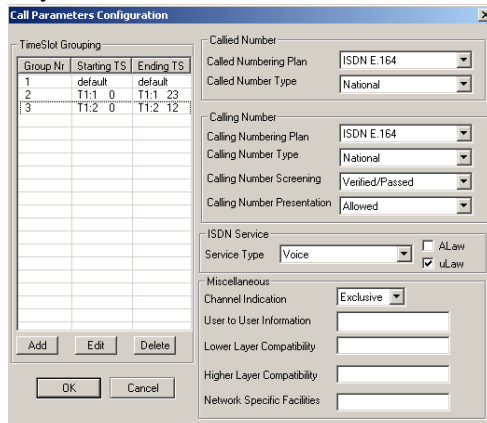
User-Friendly Interface

GL's ISDN Emulator provides a user-friendly graphical user interface (GUI). T1 or E1 supports 1 to 4 trunks with a mixture of subscriber or switch emulation on different trunks. Nearly all protocol variants (such as AT & T, Nortel and so on) are supported. Link status (Lap D) is also indicated.



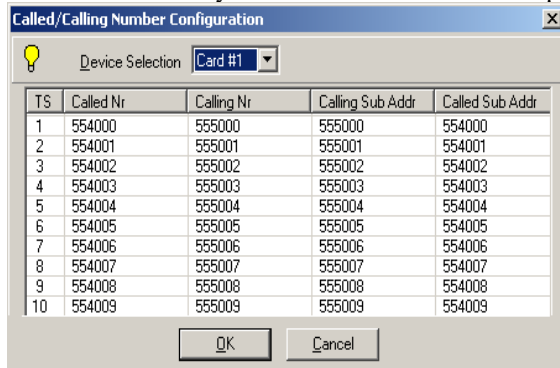
ISDN Parameters

The ISDN Emulator's Call Parameters configuration screen (left) provides the user with all required ISDN parameters (such as called number type, service type and so on). These parameters may be saved to a file, after modification, for later retrieval.



Called/Calling Number Configuration

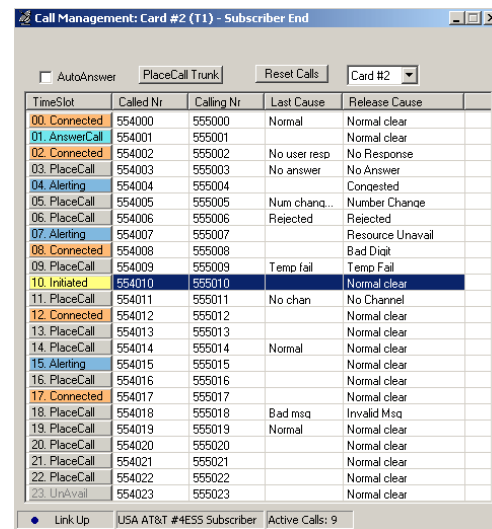
This screen allows the user to set the called and calling numbers on corresponding timeslots. The Called Number and Calling Number can be edited. ISDN sub-address can be used to address each device, when more than one ISDN devices are using the same ISDN line. Calling party sub-address is to identify a sub-address associated with the origin of a call. Called party sub-address is to identify the sub-address of the called party.



Call Management

The Call Management option allows the user to place calls on any timeslot/trunk manually. Once the calls are established, the user may send/capture PCM voice files send/detect DTMF/MF digits, and send/detect Frequency Tones. It can also insert user's voice through 'VF In.'

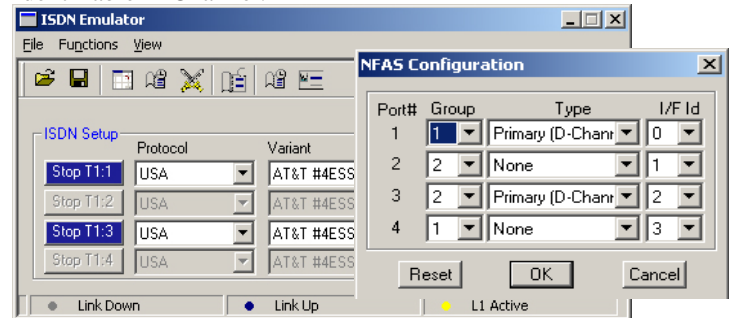
Users can set specific release cause codes for disconnecting a particular call. This feature will help in trouble shooting the problems in ISDN Network.



NFAS Grouping (Non-Facility Associated Signaling)

NFAS is a standard option available for ISDN PRI call processing system. However, with NFAS option, a single D-channel can control a maximum of 479 B-channels, i.e. up to 20 trunks (or a maximum of 478 with one B-channel as a backup). In case of GL's Dual T1/E1 Analyzer, a maximum of 95 B-Channels, i.e., up to 4 trunks are supported.

NFAS Group-configuration allows number of trunks to be classified into groups, with each group having a unique and identifiable D-Channel.



Buyers Guide

[XX105](#) - ISDN Emulator (T1 or E1)

Related Software

[XX100](#) - ISDN Analysis Software (T1 or E1)

[XX629](#) - Server Client ISDN Emulator (T1 or E1)

Related Hardware

[UTE001](#) - USB based Dual T1 or E1 Laptop Analyzer

[UTA001/UEA001](#) - Basic USB based Dual T1 or E1 Laptop Analyzer Software

[HTE001](#) - Universal HD T1 or E1 PCI Cards

[HUT001/HUE001](#) - Basic Universal HD T1/E1 Software