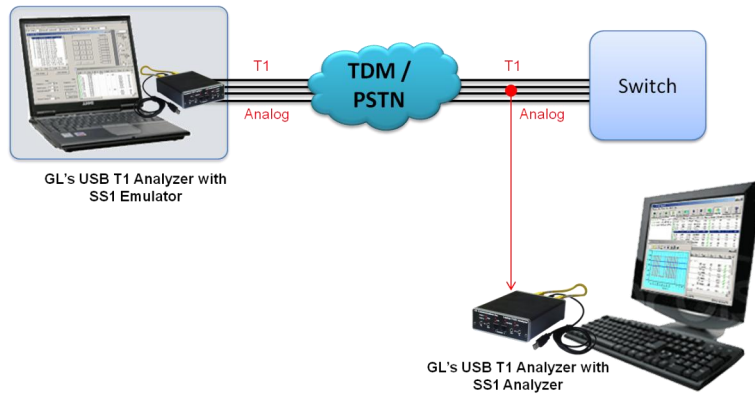


SS1 Signaling Analysis and Emulation



T1 or VF Real-Time Monitoring and Analysis

Real-Time, Remote & Offline Analysis Modes

Decodes Digits & Tone Sequences of SS1

Supports SS-1, SS-1A, & SS-4

Saves Results in CSV Files

Highlights Erroneous Tone Characteristics

Detail Evaluation Parameters along with 2 or 3 Digit Dial Code Selection

Generates SS1 Dial Codes with preset Frequencies, Duration, & other Tone parameters

Overview

Selective Signaling "SS-1" is a 2 and/or 3 digit dial system used by the Federal Aviation Administration "FAA" within their National Airspace System "NAS" Ground-to-Ground Air Traffic Control Network. It is used on leased and FAA lines between the Air Route Traffic Control Center's "ARTCC", Terminal Radar Approach Control "TRACON", Air Traffic Control Tower's "ATCT", Lockheed Martin Flight Service Hub's "FS-21", Military, National Weather Service and nongovernmental aviation facilities for the control and management of aircraft flights.

The GL's SS1 Analyzer detects and analyzes tone sequences that make up SS1 dial digits. Sequences of pulse and guard tones are detected, decoded, and assembled into their corresponding dial digits. The tone sequences are also verified for compliance against a "specification" parameter file which can correspond to published standards or user criteria. The SS1 Emulator (Dialer) application provides the ability to setup and dial tone sequences that make up SS1 dial digits. The applications' interface includes options to setup Dial Code, and control Mask (pulse) & Space (guard) frequencies and duration, Initial, Nominal, and Final Durations, Timeout definitions, Transmit Channel, and other similar parameters related to the dial code.

To learn more about GL's SS1 Analyzer, visit <http://www.gl.com/ss1analyzer.html> webpage.

Main Features

- Real-Time and File-based analysis
- Dual monitoring capability allowing multiple instances of SS1 analyzer to simultaneously tap E and W direction traffic.
- Generate and introduce SS1 Dial Codes on Transmit Channels using SS1 Dialer
- Control mark & space frequencies and duration, and power during transmission of SS1 Tones
- Ability to capture either TDM or audio signals
- Configuration screens to conveniently specify the criteria used to evaluate the sequence of SS1 tones, including specifying the use of 2-digit or 3-digit dial codes.
- Display of received dial codes, including the characteristics of the underlying tones. Dial codes whose underlying tone sequences do not meet stated criteria are clearly identified with the erroneous tone characteristics highlighted
- Provides controls to save sets of evaluation criteria, to reinstate previously saved criteria, and to reinstate factory default (industry standard) settings
- Save results to files in a Microsoft® Access and Microsoft® Excel formats
- Allows easy reviewing any number of selected dial code sequences and their underlying tone sequences while ongoing capture and analysis is proceeding
- Operate the SS1 Analyzer either remotely from the data acquisition site, or as on the same PC that is capturing the data
- Examine a faulty dial code at length with Review Dial Code and Spectral Graph features, even as a run is in progress.

 **GL Communications Inc.**

818 West Diamond Avenue - Third Floor, Gaithersburg, MD 20878, U.S.A

(Web) <http://www.gl.com/> - (V) +1-301-670-4784 (F) +1-301-670-9187 - (E-Mail) gl-info@gl.com

SS1 Analyzer

Real-time Analysis

Using GL's T1 Cards, one can internally capture signal data on a TDM channel or "timeslot". However, GL's T1 Cards also provide VF Input and Output jacks through which you can insert an audio signal onto a designated T1 timeslot.

If the SS1 signals are, being carried on an audio line, route that line into the VF Input associated with the T1 port, and then perform analysis .

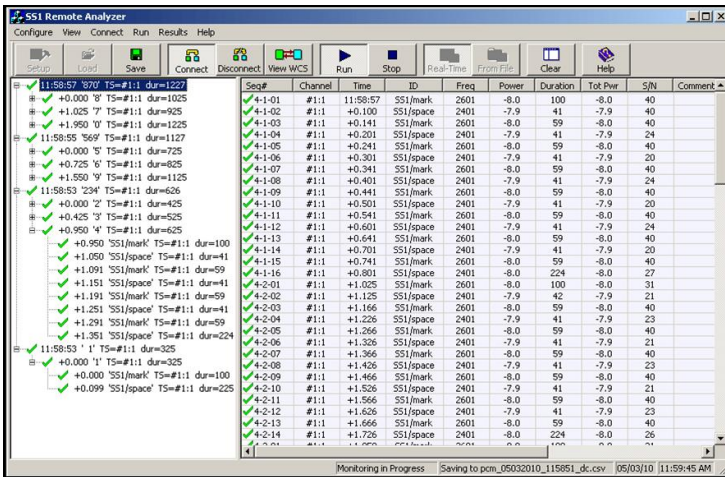


Figure: Analysis Results – Tone View

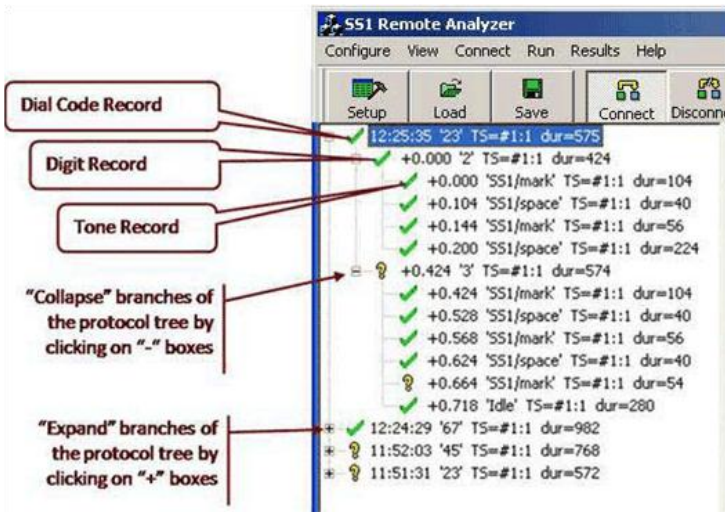


Figure: Analysis Results – Tree View

Specifying SS1 Evaluation Parameters

The SS1 Analyzer implements a wider range of values, which place lower and upper duration bounds on the FAIL range. Measurements falling outside this range disqualify a signal from being an SS1 Signaling Tone.

The values are organized as follows:

- Standard: The standard value of the parameter.
- Low Accept through High Accept: Measurements within this range are judged to PASS the evaluation criteria.
- Low Reject through High Reject: Measurements within this range but outside the Low Accept to High Accept range are judged to be MARGINAL

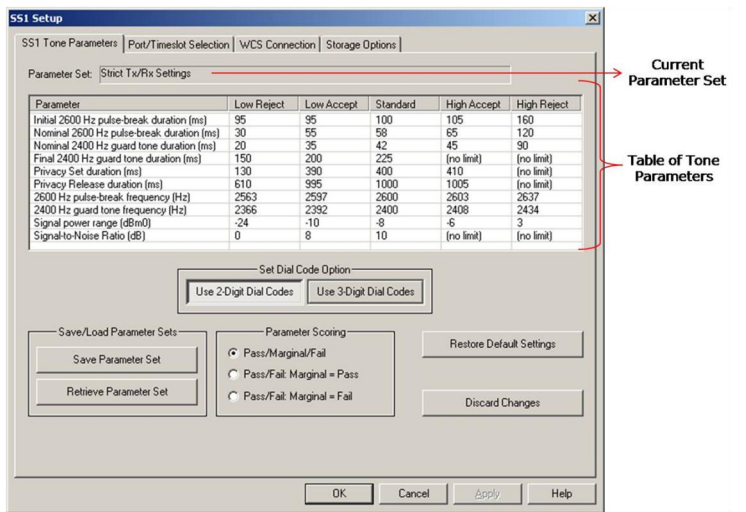


Figure: Evaluation Parameters

Parameter Scoring Options

- Pass/Marginal/Fail option - evaluates tones and their associated digit and dial codes records as PASS, MARGINAL, or FAIL.
- Pass/Fail: Marginal=Pass option causes all MARGINAL scores to be reported as Passes.

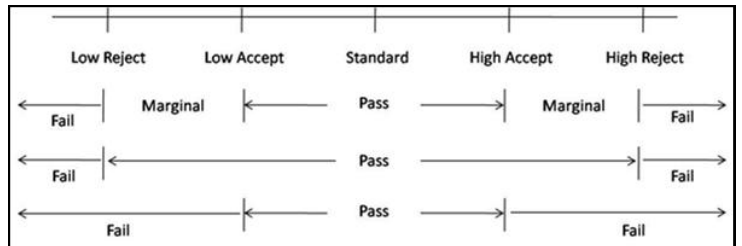


Figure: Parameter Scoring Options



818 West Diamond Avenue - Third Floor, Gaithersburg, MD 20878, U.S.A
 (Web) <http://www.gl.com/> - (V) +1-301-670-4784 (F) +1-301-670-9187 - (E-Mail) gl-info@gl.com

WCS Connections

SS1 Protocol Analyzer is a client application and requires connecting to a T1 server. This allows SS1 Analyzer to be used locally or on a remote PC w/o actual T1 hardware installation. Use the WCS Connection options to set all the information required in order to establish a connection with the WCS server and correctly correspond with it.

SS1 Analyzer and the WCS server connection options -

- Connect to server on This PC option allows SS1 Analyzer to run on the Capture PC.
- Connect to server on... option allows SS1 Analyzer to run on a Remote PC

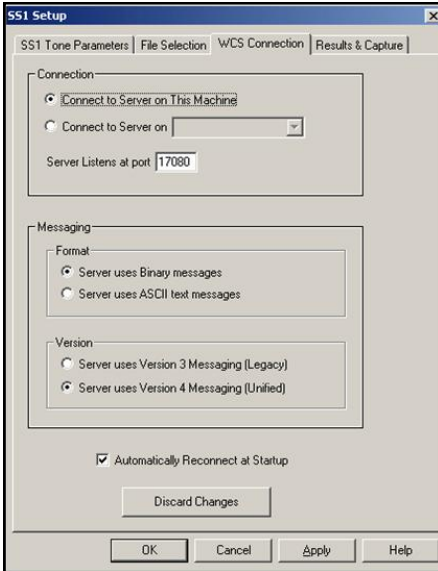


Figure: WCS Connection

File Based Analysis (Offline Analysis)

In Offline analysis, SS1 analyzer allows users to specify the folder containing the files for SS1 analysis. File formats supported are a-law, u-law pcm files.

Analyze all files in a folder with a given file name extension, or Analyze a specific file

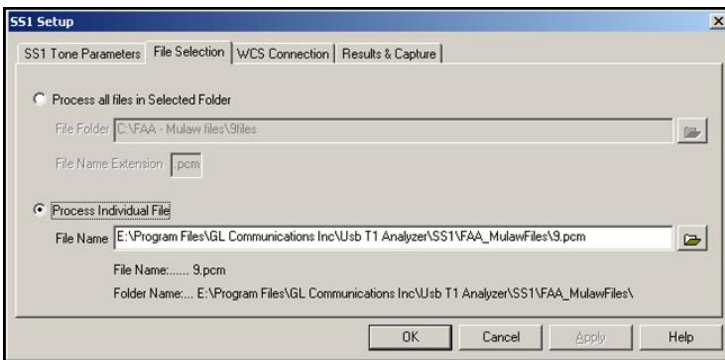


Figure: File Selection

Storage Options in Analyzer

Currently, only the CSV file format is supported by the SS1 Analyzer. This format is widely recognized by popular Windows Data Management and analysis tools such as Microsoft® Excel and Microsoft® Access.

Table Name Prefix option allows users to designate a prefix for all files to be saved. The rest of the file name will be made up of a text indicating the date and time of capture, followed by a suffix distinguishing between dial code, digit, and tone records.

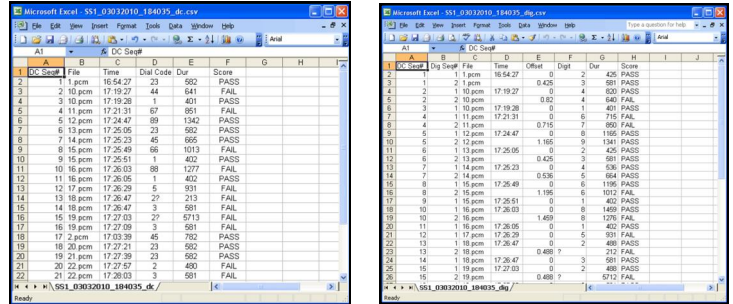


Figure: Dial Code & Digit Results in CSV files

Review and Spectral Display for Dial Codes

It is quite likely that you will want to examine a faulty dial code at length or view them as graphical waveform, even as a run is in progress. The SS1 Analyzer & Dialer provides an independent Review Dial Code and Spectral Display features for this purpose.

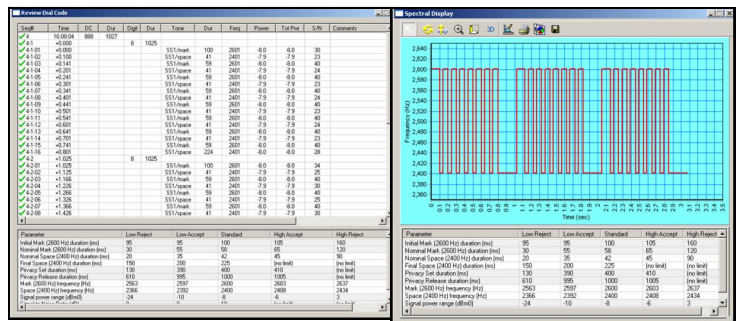


Figure: Review Dial Code & Spectral Display

Goldwave Capabilities

Mono and stereo (east and west) files that have been recorded can be viewed, heard, and analyzed with Goldwave.



Figure: Goldwave Capabilities



818 West Diamond Avenue - Third Floor, Gaithersburg, MD 20878, U.S.A
 (Web) <http://www.gl.com/> - (V) +1-301-670-4784 (F) +1-301-670-9187 - (E-Mail) gl-info@gl.com

SS1 Emulator (“Dialer”)

Overview

The Selective Signaling ‘SS – 1’ Dialing Digits (Dialer) application provides the ability to setup and dial tone sequences that make up SS1 dial digits. The applications’ interface includes options to setup Dial Code with control mark & space frequencies and duration, and other parameters related to the digit dialer. Users can create channel for Transmission (Tx), choosing Port and Timeslot

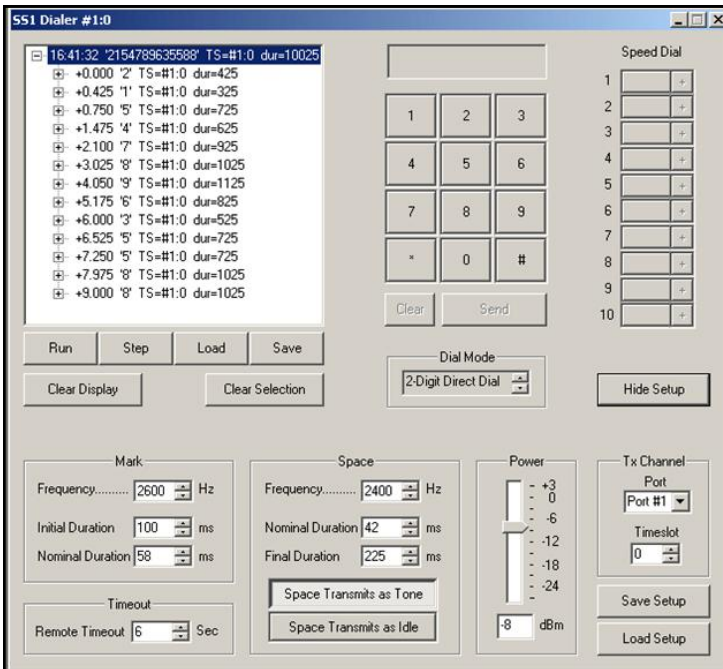


Figure: SS1 Emulator

Dial Modes

- Key & Send –All digits are transmitted back-to-back with only the final space tone separating the successive digits in a single burst.
- 2-Digit Burst –When the second digit is pressed, the digits are transmitted back-to-back in a single burst. A “1” digit always triggers a transmission, even if it is not the last digit.
- 3-Digit Burst – same as 2-Digit Burst Dial, but Dial Code contains three digits. When the third digit is pressed, the digits are transmitted back-to-back in a single burst.
- 2-Digit Direct Dial –the Dial Code are sent one-by-one as you key them. When two digits have been keyed and transmitted, the Dial Code is transferred to the Dial History (Display).
- 3-Digit Direct Dial – same as 2-Digit Direct Dial, but Dial Code contains three digits. When three digits have been keyed and transmitted, the digit record is transferred to the dial code display

Dialing

- Dialing option is used to set up Dial Code sequence
- This is a transmit application is crucial for SS1 signal emulation
- The dialed codes are transmitted via the Tx channel created.
- Supports Review Dial Code and Spectral display features

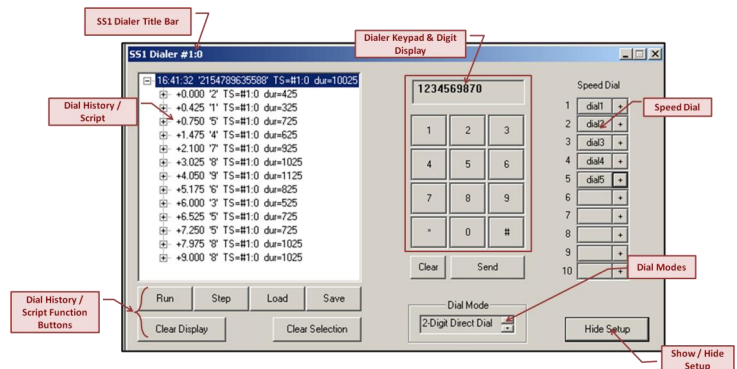


Figure: Dialing

SS1 Dialer Setup

- Set up Pulse-Break (“mark”) and Guard Tone (“space”) frequencies, duration, power, and other parameters to form SS1 Digits
- Spaces can be transmitted either as guard tones or quiet intervals
- Transmit on either digital time slots (channels) or via VF Audio
- Digit timeout imposed in Direct Dial modes

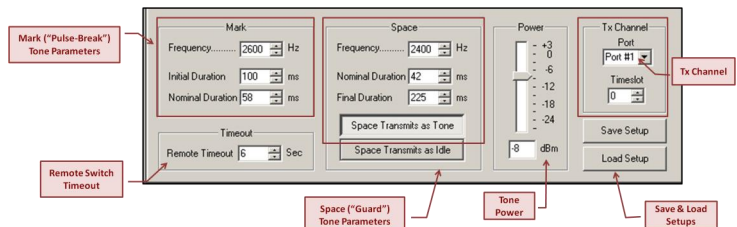


Figure: Dialer Setup

Buyers Guide

[XX626](#) – SS1 Signaling Emulator and Analyzer

[XX600](#) - Windows Client Server

Related Software

[XX605](#) - Simplified Audio Client Software

[SA048](#) - Goldwave Software

Related Hardware

[PTE001](#) - tProbe™ Dual T1 E1 Laptop Analyzer

[HTE001](#) - Universal T1 or E1 Card

[UTE001](#) - Portable USB based Dual T1 or E1 Laptop Analyzer



818 West Diamond Avenue - Third Floor, Gaithersburg, MD 20878, U.S.A
(Web) <http://www.gl.com/> - (V) +1-301-670-4784 (F) +1-301-670-9187 - (E-Mail) gl-info@gl.com