

Simplified Audio Client (SAC) - Digital / Analog with tProbe™ Analyzer



VF1 (Tx/Rx) and VF2 (Tx/Rx)



VF Tx and VF Rx



Bantam Interface Connectivity
for VF Inputs and VF Outputs



Quad Display of VF Bantam
Interfaces



Configuration of Analog/Digital
Parameters



DTMF Digits Tx / Rx Capability



Goldwave Capability for
Captured Digits, Tones, Voice



SS1 Analyzer Capture/ Record
Capability



SS1 Digits Emulator (SS1
Dialer)



Digital Functionalities Support-
coming soon...



Overview

GL's tProbe™ T1 / VF Analyzer unit supports a Simplified Audio Client (SAC) application to perform non-intrusive VF monitoring, non-intrusive VF recording, intrusive VF and T1 testing.

SAC provides an alternate & simple GUI to perform analog Tx/Rx and Digital T1 testing functionalities as compared to the analyzer software. The client-server based SAC works with GL's WCS server.

SAC supports Analog operational mode featuring two VF interfaces per unit, with each VF interface providing independent Tx/Rx functionality.

- Mode 1: VF1 (Tx/Rx) and VF2 (Tx/Rx)
- Mode 2: VF Tx and VF Rx

The application supports Spectral displays, which can be observed for both Tx/Rx directions. Analog signal can also be listened using the inbuilt speaker inside the tProbe™ unit or using stereo headphones if the environment is too noisy.

For more information on SAC, refer to <http://www.gl.com/wcs-simplified-audio-client.html> webpage.

Main Features

Analog

- Supports two independent VF I/O
- TX and RX simultaneously
- Full tone/digit generation/detection
- Multiple cards supported per system - VF Tx/Rx and VF1/ VF2
- SS1 & DTMF Goldwave Digit record/playback capability
- SS1 emulator and analyzer capture/record/playback capabilities

(coming soon...)

- Measure and Record net loss at 1004 Hz using C-Notch and C-Type filtering
- Peak to Average Ratio (P/AR)
- Phase Jitter, SNR
- Slope Measurement using 3-tone slope

Digital (coming soon...)

- T1 BERT, Fractional Bert, Pulse mask, Jitter Measurement
- DS0 noise (gains/hits/dropouts), Tone/Freq, Power measuring
- Voice/noise/digits capture /playback support
- T1 and DS0 Record/ Playback Goldwave capability
- SS7 and Ethernet traffic and many more
- Access remotely via Ethernet interface - bridging TDM to Ethernet (IP)



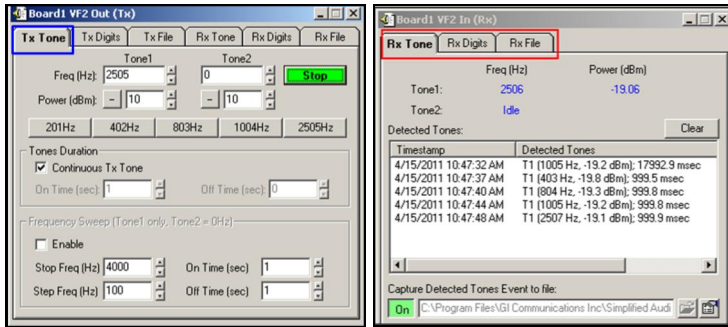
GL Communications Inc.

818 West Diamond Avenue - Third Floor, Gaithersburg, MD 20878, U.S.A

(Web) <http://www.gl.com/> - (V) +1-301-670-4784 (F) +1-301-670-9187 - (E-Mail) gl-info@gl.com

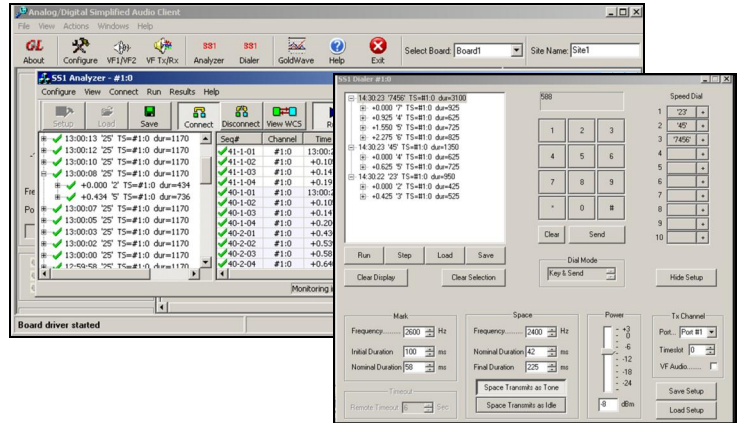
VF1 and VF2 (Tx / Rx) Actions

- VF 1/VF2 operational mode supports independent Tx/Rx, VF1 (Tx/Rx) and VF2 (Tx/Rx) simultaneously
- Tx/Rx Tones option is used to transmit/detect user-defined single/ dual Frequency tones on VF ports
- Tx/Rx Digits option used to transmit/detect DTMF/MF digits with defined On/Off time (ms) and Power (dBm)
- Send/Record Voice File option used to send GL Proprietary voice files of type PCM on VF ports

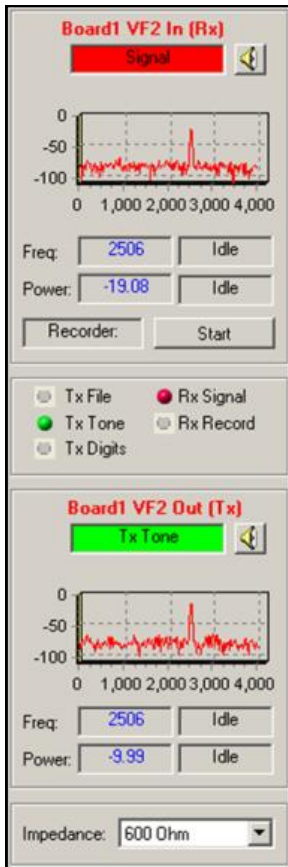


SS1 Emulator and Analyzer

- Real-time and File-based analysis
- Generate and introduce SS1 Dial Codes on Transmit Channels using SS1 Dialer
- Ability to capture either TDM or audio signals
- Evaluate sequence of SS1 tones, including 2-digit or 3-digit dial codes.
- Operate the SS1 Analyzer either remotely from the data acquisition site, or as on the same PC that is capturing the data
- Examine a faulty dial code at length with Review Dial Code and Spectral Graph features, even as a run is in progress.



VF Tx / Rx Status and Spectral Display



- Tx/ Rx status display for the tone, digits, voice transmitted/received on any particular VF port.
- Frequency, Power count status of the VF In and Out are displayed
- Data transmitted or received on a specified VF port displayed graphically (spectral Power (dBm) Vs Frequency (Hz))
- Turn On/Off Sending/Receiving Speakers provided for Tx/Rx ports
- Audio In and Out ports are supported with multiple impedance options

Goldwave Capabilities

- SS1 Signaling Record / Playback capability
- DTMF Digits Record / Playback capability



Buyer's guide

- [XX605](#) - Simplified Audio Client Software
- [XX600](#) - Basic Client/Server Scripted Control Software
- [XX626](#) - w/ SS1 Signaling Analyzer
- [SA048](#) - Goldwave Software
- [PTE001](#) - tProbe™ T1 E1 Base Unit



818 West Diamond Avenue - Third Floor, Gaithersburg, MD 20878, U.S.A
 (Web) <http://www.gl.com/> - (V) +1-301-670-4784 (F) +1-301-670-9187 - (E-Mail) gl-info@gl.com