

Uses Standard Ethernet Interface

Decodes protocols such as SCTP, M2UA, M3UA, M2PA, SUA, IUA

Permits testing and verification of Signaling Gateways

Real-time and Offline Analysis

Filtering and Search features

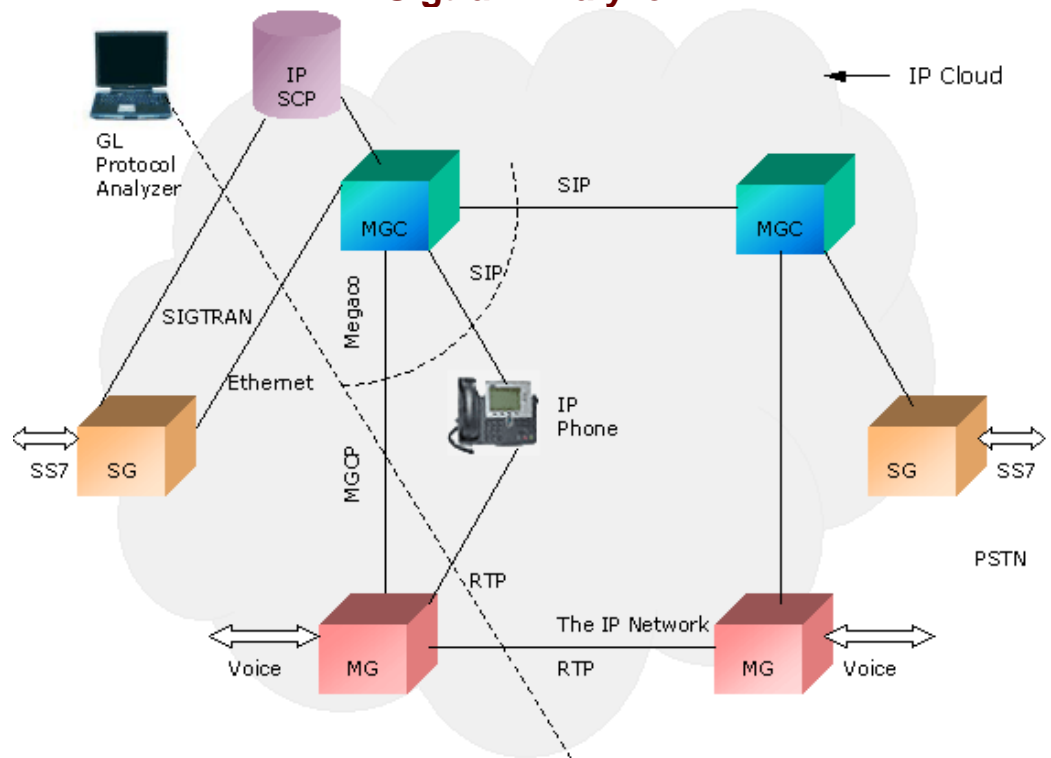
Summary, Detail, and Hex Dump Views

Statistics View displays call and MSU statistics

Call Trace View isolates call status, call duration, OPC, DPC, CIC of each call

Compatible with windows 2000/XP

Sigtran Analyzer



Protocol Analysis of SIGTRAN, MGCP, Megaco, RTP, SIP

Overview

SIGTRAN protocol decoder software is a VoIP testing tool that permits real-time analysis, call trace, capture, and filtering of SS7 and ISDN signaling messages over IP. SIGTRAN uses a new connection oriented transport protocol called Stream Control Transport Protocol (SCTP). SCTP is at the same level but more efficient at transport than TCP or UDP. Analyzer supports SCTP, M2UA, M3UA, M2PA, SUA, IUA, SIGTRAN protocols. Sigtran is a stack of networking protocols having Stream Control Transport Protocol (SCTP) and a bunch of user adaptation (UA) layers over it.

Main Features

- Supports Real-time as well as Off-line analysis
- Uses industry standard NIC Card for interfacing to Ethernet.
- GL Communications' SS7 and SIGTRAN Analyzer simultaneously can permit testing and verification of Signaling Gateways.
- Summary View displays M2UA Class, M2UA Type, M3UA Type and SUA Class, SUA Type, Called and Calling number, SCCP message type, SSN, INAP information.
- Detailed View displays easy to understand decodes of the user-selected frame.
- Hex Dump View displays the frame information in HEX and ASCII format.
- Statistics View displays call and MSU statistics at any link or entire link set.
- Call Trace View isolates call specific information such as status of each call (active/completed), duration of completed call, OPC, DPC, CIC, Called and Calling Party Numbers, and more.
- Search and filtering capabilities for both real-time as well as offline analysis.
- Capability to export summary as well as detail view information to an ASCII file for subsequent import into a database or spreadsheet.
- Provides the 'Capture Filter' option to filter M2UA, M2PA, M3UA and SUA frames on the specified ports.
- Application can be installed on computers supporting Windows 2000/XP.

For more details, visit <http://www.gl.com/sigtran.html>



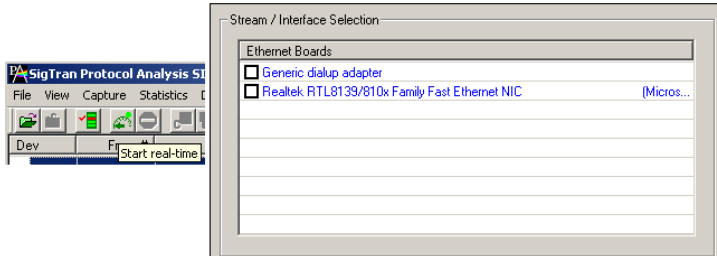
GL Communications Inc.

818 West Diamond Avenue - Third Floor Gaithersburg, MD 20878 • (V) 301-670-4784 (F) 301-670-9187

Web Page Address: <http://www.gl.com/> • E-Mail Address: gl-info@gl.com

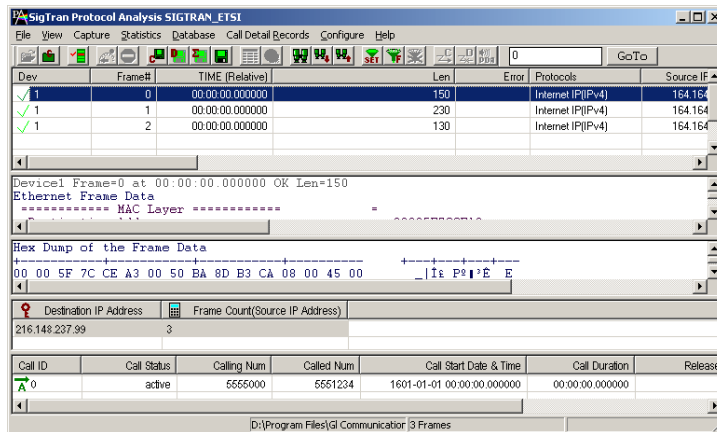
Summary, Detail and Hexdump Views

The SIGTRAN Analyzer application is invoked from the main menu of GL Communications' PacketScan™ Analyzer. The analyzer displays summary, detailed, hex dump, statistics and call trace view in different panes. The summary pane displays Direction, Frame Number, Time, Length, M2UA Class, M2UA Type, M3UA Type and SUA Class, SUA Type, Called and Calling number, SCCP message type, SSN, INAP information and various types of SIGTRAN messages for all the frames. The Hex dump view displays the frame information in HEX and ASCII.



Filtering and Search

SIGTRAN Analyzer includes powerful features such as filtering and search capabilities, that allows to isolate required frames from all frames in real-time as well as off-line analysis. The application allows filtering according to M2UA Class, M3UA Class, SUA Class, M2PA, OPC, DPC, SLC, CIC, Called and Calling party number, MAP Package Type. The Real time filtering can be done using capture filter option for M2UA, M2PA, M3UA and SUA frames on the specified ports. In addition, the application provides various search criteria to search appropriate frame.

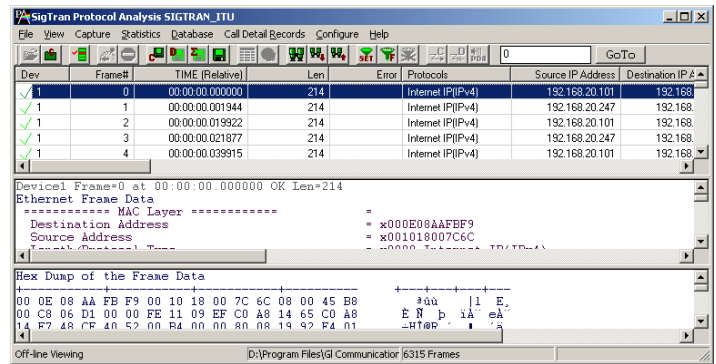


Buyers Guide:

- [PKV100](#) - PacketScan Software (required)
- [PKV105](#) - SIGTRAN Analyzer Software
- [PKV106](#) - Offline SIGTRAN Analyzer Software

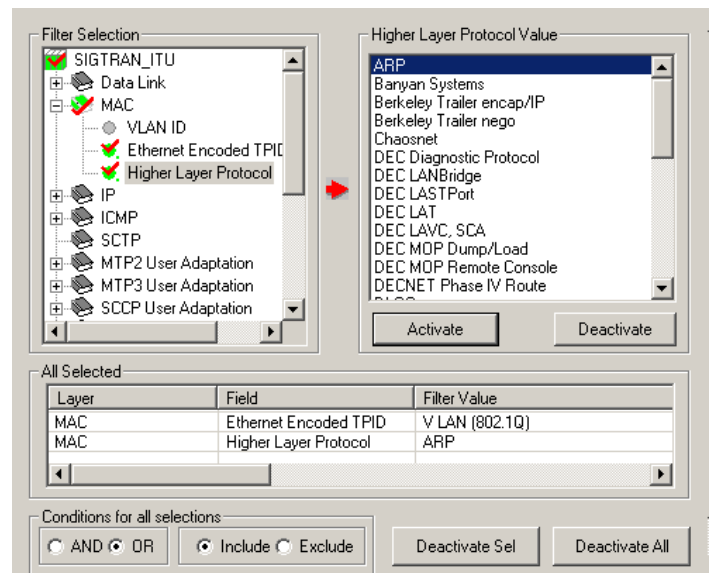
Related Software

- [PKV100](#) – PacketScan™ Software
- [XX120](#) - SS7 Analyzer Software (T1/E1)
- [XX100](#) - ISDN Analysis Software (T1/E1)
- [XX130](#) - Real-Time Frame Relay Protocol Analyzer (T1/E1)
- [XX150](#) - GSM Analysis Software (T1/E1)
- [XX153](#) - TRAU Analysis Software (T1/E11)
- [IPN100](#) - IPNetSim™ - 1Gbps of through bandwidth



Real-time and Offline Analysis

Users can capture and analyze SIGTRAN message using real-time analyzer and record all or filtered traffic into a trace file. The recorded trace file can then be analyzed offline and exported to ASCII file, or printed.



Call Trace & Statistics View

Call trace defining important call specific parameters like Call ID, Call Status, Call duration, Called Number, Release Cause etc are displayed.

Statistics is an important feature available in SIGTRAN analyzer and can be obtained for all frames both in real-time as well as offline mode. Various statistics can be obtained to study the performance, based on protocol fields and different parameters such as Use Type (Key/Total/Field), Statistic type (Frame count, Byte count, Frames/Sec) and patterns like Range List, Wild card.

Buyers Guide (contd):

Related Hardware

- [HDT001/HDE001](#) - HD T1 or E1 PCI Card
 - [UTE001](#) - Portable USB based Dual T1 or E1 Laptop Analyzer
- *Specifications and features subject to change without notice