

Quad Band and Multi-Network supports GSM, GPRS, EDGE and all frequency bands)

Supports FSP, GPRS, and EDGE systems

Real-time Protocol Analysis of GSM layer 3 messages

GSM Layer 2/3 data collection

Drive testing functionality throughout the GSM network

Frequency scanner for all 4 GSM bands

Network Optimization as well as a Voice Quality Drive testing tool

Automated scripted Call Control using VQuad™

CDMA network support coming soon.....

MobNetMon™ - Over Air Wireless Network Monitoring and Analysis



Overview

The typical problems within the wireless networks include weak signal strength, bad cell handover, neighboring cell frequency disturbance, low RxLev, RxQual, wrong signaling transmission, bad VQT score, and so on. Therefore, very often the wireless service providers, testing/engineering/consulting companies require wireless test equipment to optimize their network resources.

GL's new product, MobNetMon™, is used primarily for Drive Testing in order to determine the weak points in the wireless network. It permits automatic "off-air" monitoring of any GSM network directly from a Quad band wireless phone. With this equipment, users can generate calls, view primary and surrounding GSM base stations and detailed GSM protocol messages along with call tracing and protocol analysis.

Full decode of the GSM layer 3 messages is provided for both real time and post processing analysis. While the call is connected, change cell towers, induce critical tests within the network, and send/record voice traffic automatically. MobNetMon™ can also be used for Network Optimization as well as a Voice Quality Drive testing tool. The GL's MobNetMon™ along with VQuad™ together provide a complete solution for the next generation VQT/QOS testing.

Main Features

- Quad Band and Multi-Network support including GSM, GPRS, EDGE and all frequency bands (850MHz/900MHz/1800MHz/1900MHz)
- Real-time Protocol Analysis of GSM layer 3 messages
- Automated Traffic generation/reception for use with GL's VQT
- GSM Layer 2/3 data collection over air interface
- Supports up to 4 test phones simultaneously
- Allows complete drive testing functionality throughout the GSM network
- All results may be plotted on local maps (most countries available) using an optional GPS receiver
- Network information, which includes serving cell & 6 neighboring cells (RxLev, RxQual, TA, BSIC)
- Frequency scanner for all 4 GSM bands.

Solutions

- Daily operation and maintenance (service providers must make sure of network equipment operation).
- The MobNetMon™ w/VQT is the best tool for optimizing the wireless network.
- Deploying a new network for the service provider

For more details, please visit our web page <http://www.gl.com/mobnetmon.html>.



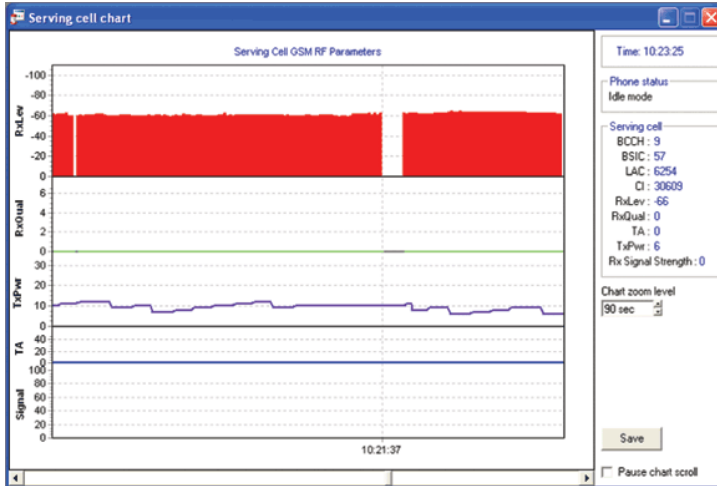
GL Communications Inc.

818 West Diamond Avenue - Third Floor. Gaithersburg, MD 20878 • (V) 301-670-4784 (F) 301-670-9187

Web Page Address: <http://www.gl.com/> • E-Mail Address: gl-info@gl.com

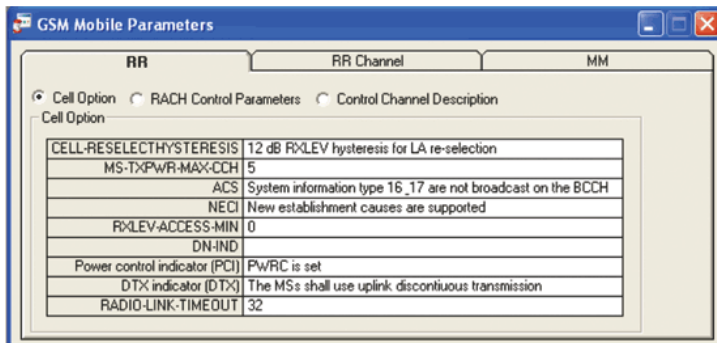
Serving Cell Chart

Displays the GSM parameter values of the serving cell such as RxLev, RxQual, TxPwr, TA, and Signal strength. Pause, zoom, and print features available.



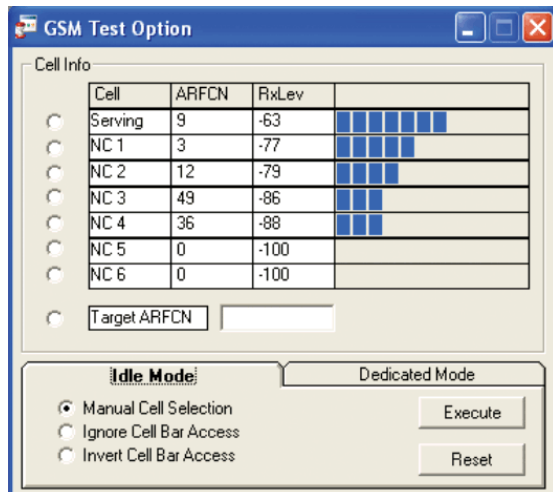
GSM Parameters

Displays the GSM RR and MM layer information. Indicates the idle channel and dedicated channel information of GSM RR layer.



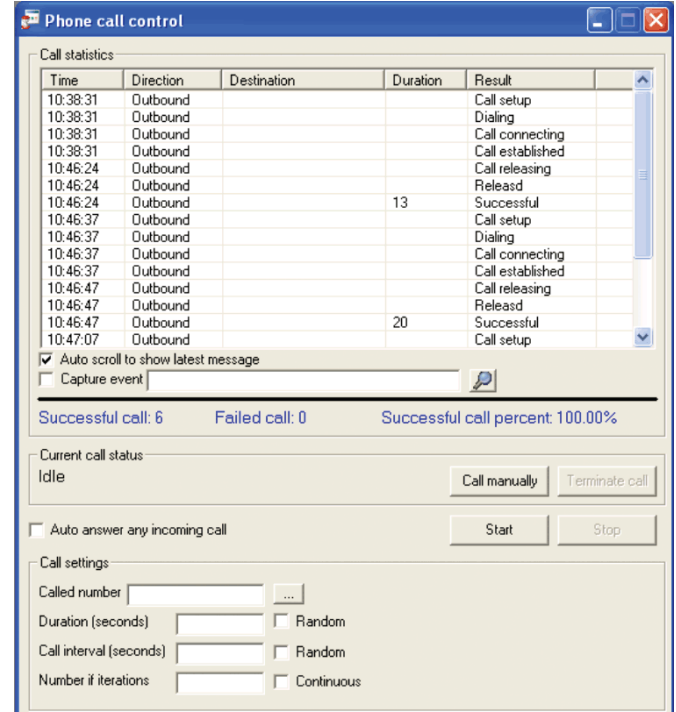
GSM Test

Allows the user to force the idle cell as well as force a cell handover during an established call.



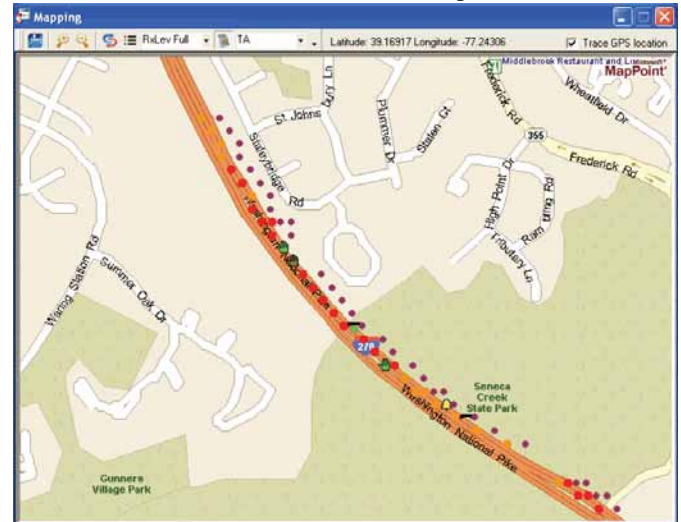
Phone Call Control

Application permits users to configure a call plan during the test or to dial a specified destination number manually. The "call statistics" displays all call events.



Mapping

The test trace route can be drawn on the optional street map with user-defined colors for the selected GSM parameters.



Buyer's Guide:

- [VQT500](#) - MobNetMon™
- [VQT511](#) - USA/Canada GPS Option (include GPS receiver)
- [VQT512](#) - European GPS Option (include GPS receiver)

Related Software

- [VQT010](#) - VQuad™ (Automated File Transceiver) Base s/w
- [VQT020](#) - VQuad™ Wireless Phone Call Control
- [VQT004](#) - Voice Quality Testing (PAMS, PSQM, PESQ)

*Specifications are subject to change without notice.